

2024

Healthcare Directory



We want to keep you healthy. We want to make you proud.



Owensboro Health
Healthpark

Celebrating

25
★ YEARS ★



Explore the variety of services, programs and amenities you'll enjoy at the Healthpark:

Healthpark Membership Services
270-688-5433 *(Ask for membership)*
OwensboroHealth.org/Healthpark

Lifesteps® Weight Management Program
270-688-4764
Lifesteps@OwensboroHealth.org
OwensboroHealth.org/Lifesteps

Diabetes Prevention Program (DPP)
270-688-4858
OwensboroHealth.org/DPP

Diabetes or Nutrition Counseling
270-688-4804 *(Referral needed)*
Contact your Primary Care Provider
or call the number above.

Quit Now Kentucky
1-800-QUIT NOW
(1-800-784-8669)

Personal Training
270-688-4828

Exercise is Medicine
270-688-3224 *(Referral needed)*

Lifestyle Medicine
270-688-2110

B.A.S.E./Fall Prevention
270-688-4785

Cooking Classes
270-688-4804

Employee Assistance Program (EAP)
270-688-1547

Connections (Age 55+ Wellness Program)
270-688-4855
OwensboroHealth.org/Connections

Connections Van Service
270-688-4865

OwensboroHealth.org/Wellness
OwensboroHealth.org/Nutrition
OwensboroHealth.org/Healthpark



Table of Contents

Physician Letter	2	Neuropsychology.....	47
Physician Relations	3	Obstetrics & Gynecology	48-50
Owensboro Health Service Area.....	4	Obstetrics & Gynecology Hospitalists	51
Hospital Locations	5-7	Occupational Medicine.....	51-53
Ancillary Services.....	8-11	Ophthalmology	53
Addiction Services.....	14	Oral & Maxillofacial Surgery.....	53
Allergy & Immunology	14	Orthopedics & Sports Medicine	54-57
Anesthesia.....	14-15	Otolaryngology.....	57
Bariatrics.....	16	Pain Management	58-59
Behavioral Services	16-19	Palliative Care.....	59
Cardiology	19-21	Pathology.....	60
Cardiothoracic Surgery.....	21	Pediatric Cardiology	60
Cosmetic Surgery.....	22	Pediatrics.....	61-62
Education & Wellness.....	22-25	Pediatric Hospitalists	62
Emergency Medicine.....	26-27	Physical Medicine & Rehabilitation.....	63
Endocrinology.....	28	Plastic & Reconstructive Surgery	64
Family Medicine.....	28-36	Plastic Surgery.....	64
Gastroenterology & Hepatology.....	36-37	Podiatry	64-66
Geriatrics.....	37	Prosthetics	66
Hematology & Oncology	37-38	Pulmonology.....	67
Hospitalists.....	39-40	Pulmonology/Critical Care	67-68
Infectious Disease	41	Radiation Oncology.....	69
Internal Medicine.....	41-43	Radiology	69-70
Lifestyle Medicine.....	43	Sleep Medicine.....	71-72
Long-Term Care	44	Sports Medicine	72-73
Maternal-Fetal Medicine.....	44	Surgery	74-76
Neonatal-Perinatal.....	44	Urgent Care	77-79
Nephrology.....	45	Urology.....	79-80
Neurohospitalists.....	46	Weight Management	80
Neurological Surgery.....	46	Wound Care	81
Neurology.....	47		

This directory includes all providers that have active privileges at Owensboro Health facilities and all Owensboro Health providers.



Our Administrative team wants to be proactive in identifying physicians in training or others who are currently in practice but might have ties and/or interest in practicing in our communities. Our physicians are our best recruiters of other quality physicians. As such, we are writing to ask for your help in identifying anyone you might know who may have an interest in practicing medicine in western Kentucky.

Our goal is to bring more talented, compassionate physicians to the communities we serve. To do so, we need to initiate conversations early with medical students, residents and fellows. We are open to explore an employed option with these physicians or help connect them with community physicians if they prefer a private practice opportunity.

If you are aware of a potential candidate now or in the future, please have them contact our Director of Physician Recruitment and Retention, Mitchell Sims.

Email: Mitchell.Sims@OwensboroHealth.org
Cell: 270-485-2725

Thank you for your assistance in identifying and recruiting high quality physicians to our community. And as always, thank you for providing quality care as we heal the sick and improve the health of the communities we serve.

Sincerely,

A handwritten signature in blue ink that reads "Mark Marsh".

Mark Marsh
President and CEO

A handwritten signature in blue ink that reads "Mack Howell".

Mack Howell
COO of Owensboro Health Medical Group

Physician Relations

Physician Liaisons

2211 Mayfair Ave.
Suite 309
Owensboro, KY 42301

Hillary Simmons
270-688-3238
Hillary.Simmons@OwensboroHealth.org



Hillary Simmons



Mary Beth Bennett

Mary Beth Bennett
270-688-3268
Mary.Bennett@OwensboroHealth.org

Physician Recruitment

Dianne Miles
Dianne.Miles@OwensboroHealth.org



Dianne Miles

Jerry Price
Jerry.Price@OwensboroHealth.org



Jerry Price

Megan Carter
Megan.Carter@OwensboroHealth.org



Megan Carter

Kliricia Mullican
Kliricia.Mullican@OwensboroHealth.org



Kliricia Mullican

Owensboro Health Medical Group Administration

Mack Howell
Mack.Howell@OwensboroHealth.org



Mack Howell,
COO of
Owensboro Health
Medical Group

Mitchell Sims
Mitchell.Sims@OwensboroHealth.org

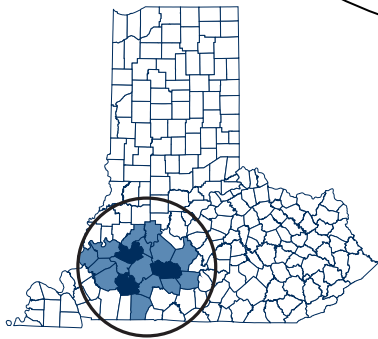
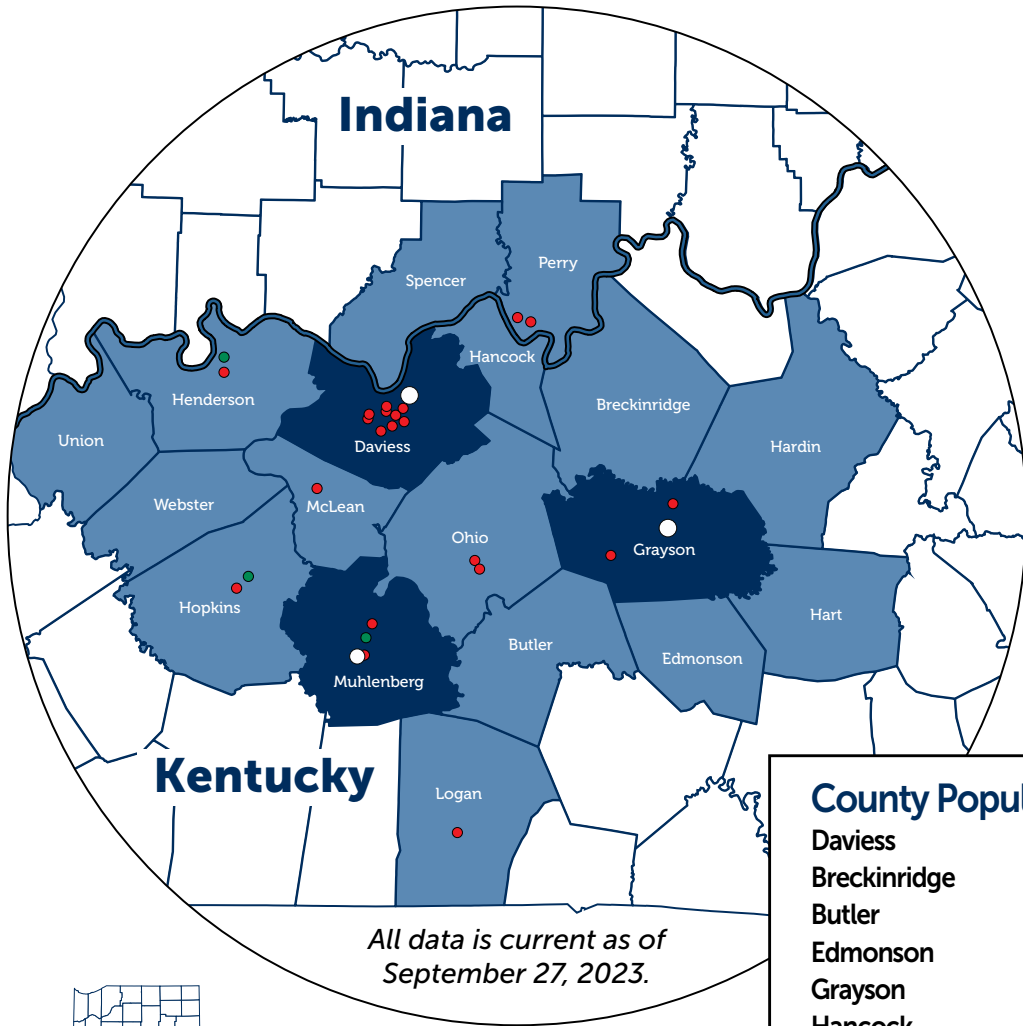


Mitchell Sims,
Director of Physician
Recruitment and
Retention

Call Center / Transfer Center 855-417-8555

Central Scheduling 270-685-7100

Owensboro Health Service Area



- Primary service area
- Secondary service area
- Owensboro Health facilities
- Owensboro Health hospital locations
- Owensboro Health Healthplexes

County Populations	
Daviess	103,312
Breckinridge	20,432
Butler	12,371
Edmonson	12,126
Grayson	26,420
Hancock	9,095
Hardin	110,702
Hart	19,288
Henderson	44,793
Hopkins	45,423
Logan	27,432
McLean	9,152
Muhlenberg	30,928
Ohio	23,772
Union	13,668
Webster	13,017
Perry, IN	19,170
Spencer, IN	19,810
TOTAL	560,911

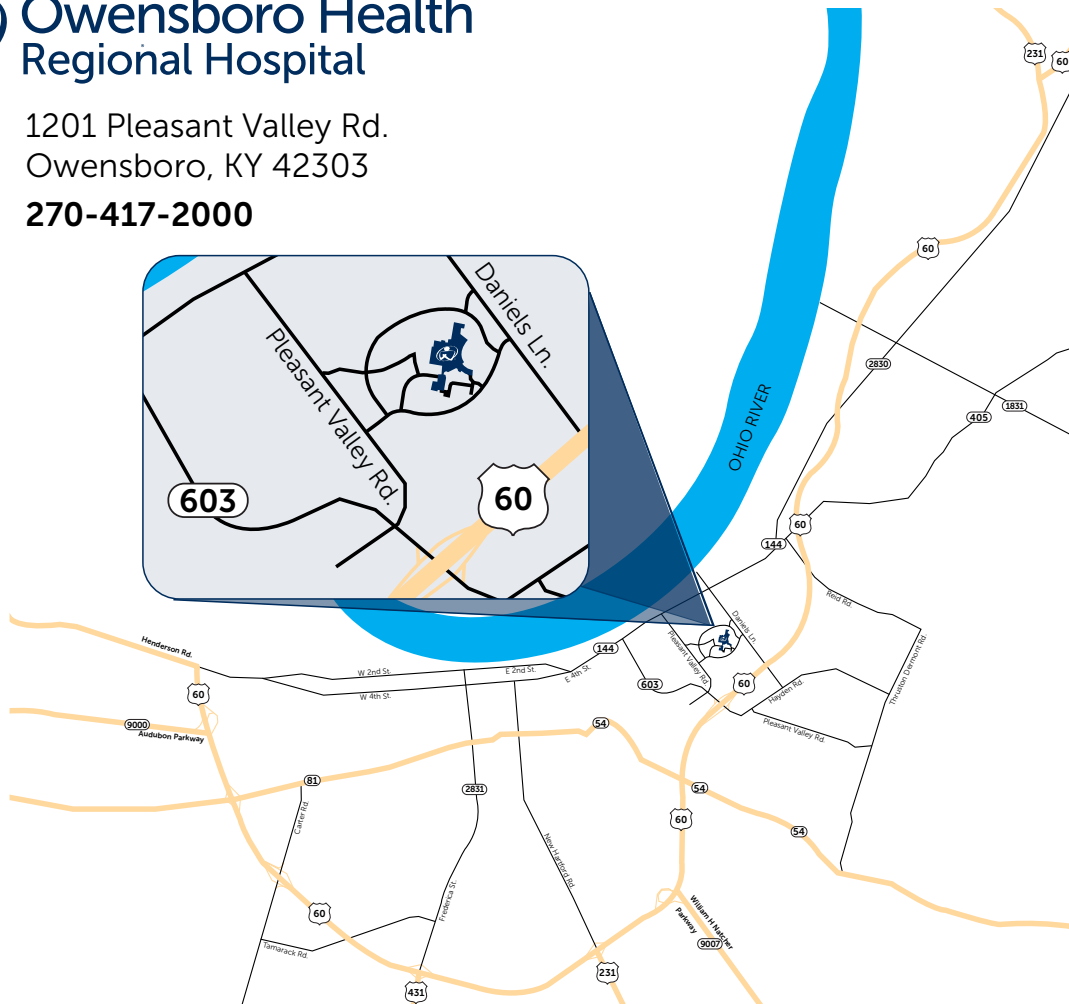
2020 Census Data

Hospital Locations



Owensboro Health Regional Hospital

1201 Pleasant Valley Rd.
Owensboro, KY 42303
270-417-2000



DRIVING DIRECTIONS

From Downtown Owensboro

- Head east on Fourth St.
- Continue onto KY 144.
- ➔ In 0.6 miles, turn right onto Pleasant Valley Rd.
- ➔ In 0.6 miles, Owensboro Health Regional Hospital will be on your left.

From the Audubon Parkway/Natcher Parkway/US 231/US 431/KY 54

- Head east on US 60.
- Take exit 19 to Pleasant Valley Rd.
- ➔ Turn left onto Pleasant Valley Rd.
- ➔ Take the first right turn to follow Pleasant Valley Rd.
- ➔ In 0.4 miles Owensboro Health Regional Hospital will be on your right.

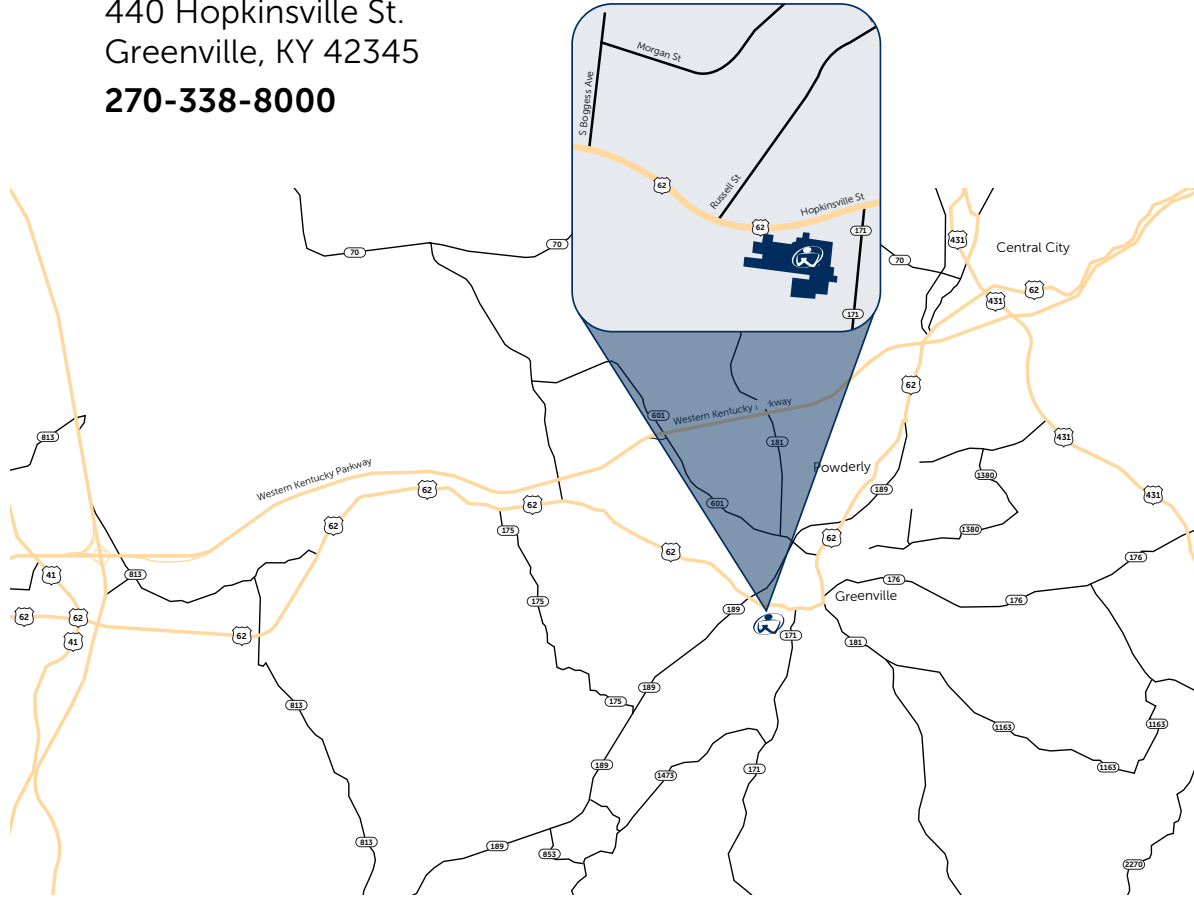
From I-64

- Head south on US 231 toward Owensboro for 33 miles. You will cross the William H. Natcher Bridge into Kentucky.
- From the William H. Natcher Bridge, continue west 10.6 miles on US 60.
- Take exit 19 to Pleasant Valley Rd.
- ➔ Turn right onto Pleasant Valley Rd.
- ➔ Take the first right turn to follow Pleasant Valley Rd.
- ➔ In 0.4 miles, Owensboro Health Regional Hospital will be on your right.

Hospital Locations



440 Hopkinsville St.
Greenville, KY 42345
270-338-8000



DRIVING DIRECTIONS

Western Kentucky Parkway from the east:

- Take Exit 53 toward Greenville/Sacramento.
- ➔ Turn right onto KY 181.
- ➔ After 2.4 miles, turn left onto Luzerne Dr. (KY-601).
- ➔ Take the first right onto KY 189.
- ➔ After 1.5 miles, turn left onto US 62.
- ➔ Continue for 1 mile. Owensboro Health Muhlenberg Community Hospital is on the right.

From Hopkinsville:

- Head north on the Pennyryle Parkway.
- Take Exit 33 toward Nortonville/Greenville.
- ➔ Turn right onto US 62 (Hopkinsville Rd.).
- ➔ Continue for 16.1 miles. Owensboro Health Muhlenberg Community Hospital is on the right.

Western Kentucky Parkway from the west:

- Take Exit 48 toward Greenville/US 62/Graham.
- Merge right onto KY 175.
- ➔ After 0.6 miles turn left onto US 62.
- ➔ Continue for 5.3 miles. Owensboro Health Muhlenberg Community Hospital is on the right.

From Lake Malone:

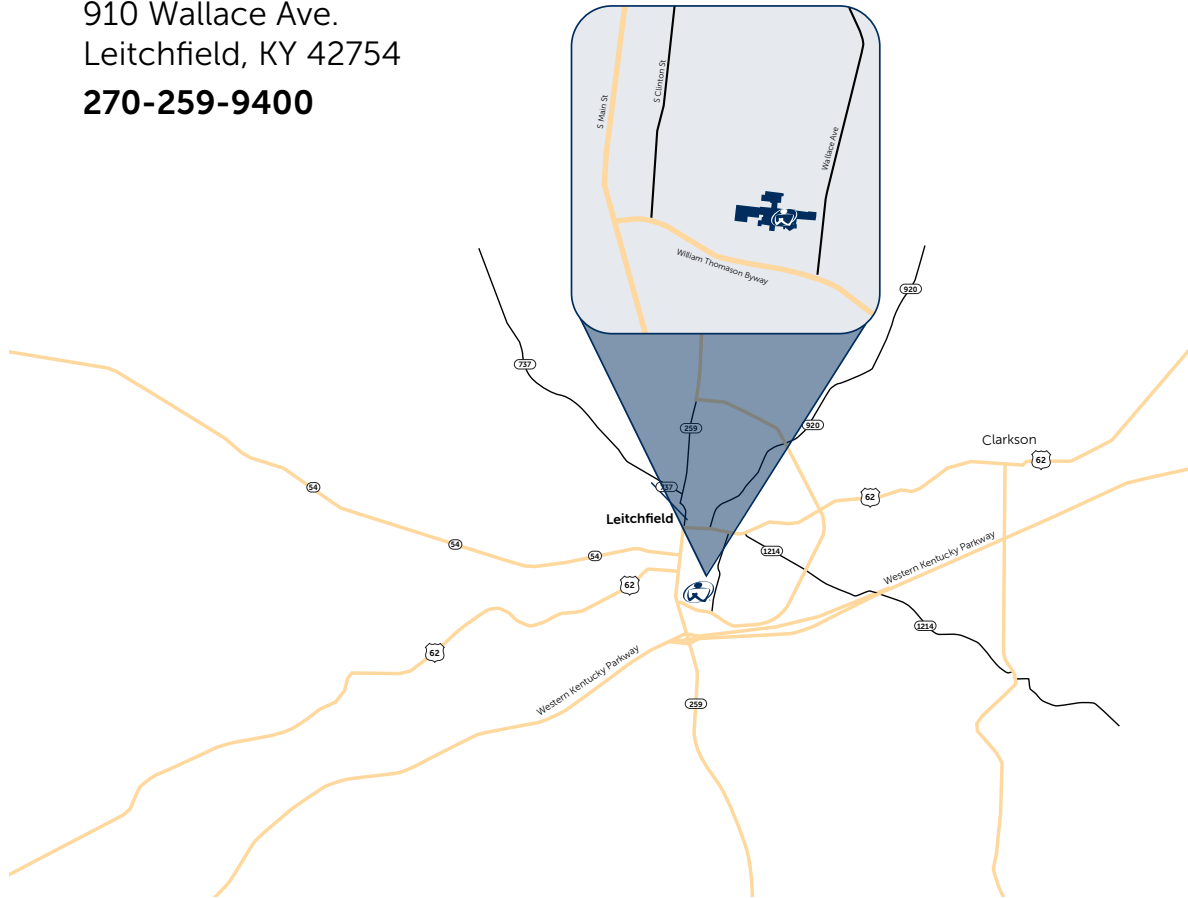
- From KY 973, take KY 181 north for 9.5 miles toward Greenville.
- ➔ Turn left onto US 62 (Hopkinsville St.).
- ➔ Continue for 0.7 miles. Owensboro Health Muhlenberg Community Hospital is on the LEFT.

Hospital Locations



Owensboro Health Twin Lakes Medical Center

910 Wallace Ave.
Leitchfield, KY 42754
270-259-9400



DRIVING DIRECTIONS

Western Kentucky Parkway from the east (Elizabethtown):

- Take Exit 107 onto KY-259 toward Leitchfield
- ➔ Turn right onto S. Main St. toward Leitchfield (.3 miles).
- ➔ Turn right onto William Thomason Byway (.4 miles).
- ➔ Turn left (.2 miles).
- Continue for 30 feet. Owensboro Health Twin Lakes Medical Center is on the left.

Western Kentucky Parkway from the west (Paducah):

- Take Exit 107 onto KY-259 toward Leitchfield.
- ➔ Turn left onto S. Main St. toward Leitchfield (.2 miles).
- ➔ Turn right onto William Thomason Byway (.4 miles).
- ➔ Turn left (.2 miles).
- Continue for 30 feet. Owensboro Health Twin Lakes Medical Center is on the left.

Ancillary Services

Audiology

LEITCHFIELD

Owensboro Health Twin Lakes Medical Center

910 Wallace Ave., Suite 207
Leitchfield, KY 42754
Phone: 270-259-2714

OWENSBORO

Ford Medical Building

A department of Owensboro Health Regional Hospital
2211 Mayfair Ave., Suite 402
Owensboro, KY 42301
Phone: 270-688-6140 Fax: 270-417-0140

Heart & Lung Rehab

GREENVILLE

Owensboro Health Muhlenberg Community Hospital

440 Hopkinsville St.
Greenville, KY 42345
Phone: 270-338-8361

LEITCHFIELD

Owensboro Health Twin Lakes Medical Center

910 Wallace Ave.
Leitchfield, KY 42754
Phone: 270-259-9584

OWENSBORO

Ford Medical Building

A department of Owensboro Health Regional Hospital
2211 Mayfair Ave., Suite 410
Owensboro, KY 42301
Phone: 270-688-5155 Fax: 270-688-5131

Home Health

CENTRAL CITY

A department of Owensboro Health
Muhlenberg Community Hospital
101 Legion Dr.
Central City, KY 42330
Phone: 270-754-9340 Fax: 270-754-9337

OWENSBORO

Lincoln Professional Center

A department of Owensboro Health Regional Hospital
2816 Veach Rd., Suite 303
Owensboro, KY 42303
Phone: 270-688-2182 Fax: 270-688-2816
Phone: 888-299-2182

Imaging

GREENVILLE

Owensboro Health Muhlenberg Community Hospital

440 Hopkinsville St.
Greenville, KY 42345
Phone: 270-338-8584 Fax: 270-338-8475

HENDERSON

Henderson Healthplex

A department of Owensboro Health Medical Group
1200 Barret Blvd.
Henderson, KY 42420
Phone: 270-844-8600 Fax: 270-844-8610

LEITCHFIELD

Owensboro Health Twin Lakes Medical Center

910 Wallace Ave.
Leitchfield, KY 42754
Phone: 270-259-1613 Fax: 270-200-4499

MADISONVILLE

Madisonville Healthplex

A department of Owensboro Health Medical Group
510 Ruby Dr.
Madisonville, KY 42431
Phone: 270-399-7900 Fax: 270-399-7910

MADISONVILLE

Multicare

A department of Owensboro Health Medical Group
444 S. Main St.
Madisonville, KY 42431
Phone: 270-326-5505 Fax: 270-824-6644

OWENSBORO

Breckenridge Medical Building

A department of Owensboro Health Regional Hospital
1000 Breckenridge St.
Owensboro, KY 42303
Phone: 270-685-7100 Fax: 270-688-2275

Ancillary Services

OWENSBORO

The Springs Health Centre

A department of Owensboro Health Regional Hospital
2200 E. Parrish Ave., Bldg. D, Suite 200
Owensboro, KY 42303

Phone: 270-685-7100 **Fax:** 270-688-2275

OWENSBORO

Healthpark Diagnostics Center

A department of Owensboro Health Regional Hospital
1006 Ford Ave.
Owensboro, KY 42301

Phone: 270-685-7100 **Fax:** 270-688-2275

OWENSBORO

Owensboro Health Regional Hospital

1201 Pleasant Valley Rd.
Owensboro, KY 42303

Phone: 270-417-6100 **Fax:** 270-417-0175

POWDERLY

Muhlenberg Healthplex

A department of Owensboro Health Medical Group
2025 W. Everly Brothers Blvd.
Powderly, KY 42367

Phone: 270-377-2600 **Fax:** 270-377-2610

TELL CITY

Riverfront Clinic

A department of Owensboro Health Medical Group
421 Seventh St.
Tell City, IN 47586

Phone: 812-547-7448 **Fax:** 812-547-7331

Laboratory Services

BEAVER DAM

1213 N. Main St.
Beaver Dam, KY 42320

Phone: 270-274-4771 **Fax:** 270-274-4884

BIG CLIFTY

A department of Owensboro Health Medical Group
9847 Elizabethtown Road
Big Clifty, KY 42712

Phone: 270-242-2000 **Fax:** 270-242-2100

CANEYVILLE

Owensboro Health Laboratory in Caneyville

A department of Owensboro Health Medical Group
301 Sunset Drive
Caneyville, KY 42721

Phone: 270-879-3711 **Fax:** 270-879-8674

GREENVILLE

Owensboro Health Muhlenberg Community Hospital

440 Hopkinsville St.
Greenville, KY 42345

Phone: 270-338-8362 **Fax:** 270-338-8155

HENDERSON

Henderson Healthplex

A department of Owensboro Health Regional Hospital
1200 Barret Blvd.
Henderson, KY 42420

Phone: 270-844-8600 **Fax:** 270-844-8610

LEITCHFIELD

Owensboro Health Twin Lakes Medical Center

910 Wallace Ave
Leitchfield, KY 42754

Phone: 270-249-9496 **Fax:** 270-259-9498

MADISONVILLE

Madisonville Healthplex

A department of Owensboro Health Regional Hospital
510 Ruby Dr.
Madisonville, KY 42431

Phone: 270-399-7900 **Fax:** 270-399-7910

MADISONVILLE

Multicare

A department of Owensboro Health Regional Hospital
444 S. Main St.
Madisonville, KY 42431

Phone: 270-821-4444 **Fax:** 270-821-3836

OWENSBORO

Owensboro Health Regional Hospital

1201 Pleasant Valley Rd.
Owensboro, KY 42303

Phone: 270-417-4500 **Fax:** 270-417-6508

OWENSBORO

Breckenridge Medical Building

A department of Owensboro Health Regional Hospital
1000 Breckenridge St.
Owensboro, KY 42303

Phone: 270-688-3690 **Fax:** 270-688-2275

Ancillary Services

OWENSBORO

Healthpark Diagnostics Center

A department of Owensboro Health Regional Hospital
1006 Ford Ave.

Owensboro, KY 42301

Phone: 270-688-4820 **Fax:** 270-688-5449

OWENSBORO

The Springs Health Centre

A department of Owensboro Health Regional Hospital
2200 E. Parrish Ave., Bldg. D, Suite 200

Owensboro, KY 42303

Phone: 270-683-8341 **Fax:** 270-688-2275

OWENSBORO

Triplett Medical Building

A department of Owensboro Health Medical Group
1325 Triplett St.

Owensboro, KY 42303

Phone: 270-686-8500 **Fax:** 270-685-5467

POWDERLY

Muhlenberg Healthplex

A department of Owensboro Health Medical Group
2025 W. Everly Brothers Blvd.

Powderly, KY 42367

Phone: 270-377-2600 **Fax:** 270-377-2610

TELL CITY

Lincoln Park Plaza

A department of Owensboro Health Medical Group
27 US Hwy 66 E

Tell City, IN 47586

Phone: 812-395-2011 **Fax:** 812-395-2012

Prevention Services

OWENSBORO

Pleasant Valley Medical Building

1301 Pleasant Valley Rd.

Owensboro, KY 42303

Phone: 270-417-7641

Therapy Services

(Physical Therapy, Occupational Therapy, Speech Therapy)

GREENVILLE

(Physical Therapy/Occupational Therapy/Speech Therapy)

Owensboro Health Muhlenberg Community Hospital

440 Hopkinsville St.

Greenville, KY 42345

Phone: 270-338-8413 **Fax:** 270-338-8139

HENDERSON

(Physical Therapy)

A department of Owensboro Health Regional Hospital
3135 Zion Rd.

Henderson, KY 42420

Phone: 270-826-9099 **Fax:** 270-826-9097

LEITCHFIELD

(Physical Therapy/Occupational Therapy/Speech Therapy)

Owensboro Health Twin Lakes Medical Center

910 Wallace Ave.

Leitchfield, KY 42754

Phone: 270-259-9469 **Fax:** 270-259-9401

MADISONVILLE

Multicare

(Physical Therapy)

A department of Owensboro Health Medical Group
444 Main St., Third Floor

Madisonville, KY 42431

Phone: 270-326-5593 **Fax:** 270-824-9777

OWENSBORO

(Physical Therapy/Occupational Therapy/Speech Therapy)

Healthpark

A department of Owensboro Health Regional Hospital
1006 Ford Ave.

Owensboro, KY 42301

Phone: 270-683-9355 **Fax:** 270-688-6540

OWENSBORO

(Physical Therapy/Occupational Therapy/Speech Therapy)

Owensboro Health Regional Hospital

1201 Pleasant Valley Rd.

Owensboro, KY 42303

Phone: 270-417-4500 **Fax:** 270-417-0192

Ancillary Services

OWENSBORO

(Speech Therapy – Swallowing)

Mitchell Memorial Cancer Center

A department of Owensboro Health Regional Hospital

1020 Breckenridge St., Suite 200

Owensboro, KY 42303

Phone: 270-688-3600

OWENSBORO

(Occupational Therapy – Lymphedema)

Wound Center

A department of Owensboro Health Regional Hospital

1325 Triplett St., Suite B

Owensboro, KY 42303

Phone: 270-688-4309

Respiratory Therapy

GREENVILLE

Coal Miners' Respiratory Clinic

A department of Owensboro Health

Muhlenberg Community Hospital

440 Hopkinsville St.

Greenville, KY 42345

Phone: 270-338-8300 **Fax:** 270-338-8427

Sleep Labs

GREENVILLE

Owensboro Health Muhlenberg

Community Hospital

440 Hopkinsville St.

Greenville, KY 42345

Phone: 270-338-8400 **Fax:** 270-338-8526

LEITCHFIELD

Owensboro Health Twin Lakes Medical Center

908 Wallace Ave., Suite 202

Leitchfield, KY 42754

Phone: 270-200-4536

OWENSBORO

Parrish Medical Building

A department of Owensboro Health Regional Hospital

811 E. Parrish Ave., Suite 201

Owensboro, KY 42303

Phone: 270-688-5221 **Fax:** 270-688-5223

Wound Care

BEAVER DAM

A department of Owensboro Health Regional Hospital

1307 N. Main St.

Beaver Dam, KY 42320

Phone: 270-688-2210 **Fax:** 270-687-4322

LEITCHFIELD

Owensboro Health Twin Lakes Medical Center

910 Wallace Ave.

Leitchfield, KY 42754

Phone: 270-259-1612

OWENSBORO

Triplett Medical Building

A department of Owensboro Health Regional Hospital

1325 Triplett St., Suite B

Owensboro, KY 42303

Phone: 270-688-4325 **Fax:** 270-687-4322

Your Healthcare. Your Way.



Getting Started

1.

Download the MyChart app to your smartphone.

Scan the QR Code with your smartphone camera or go to OwensboroHealth.org/MyChart



2.

Sign up for Owensboro Health MyChart.

To sign up for MyChart, you must be at least 13 years old. There are several different methods of MyChart signup:

- Clinic staff can help you sign up while you're at the front desk or in the exam room.
- You might receive a MyChart activation code on your **After Visit Summary**.
- Use self-sign up online to create a MyChart account by matching your information against what is on file in your medical record or with third-party identity verification.



Learn more at OwensboroHealth.org/MyChart



EpicCare Link



EpicCare Link is a web-based portal system that allows Owensboro Health to extend a read-only version of patient information to external care facilities to improve the continuity of care in our communities.

Provider offices

- View your patient's records while they are admitted to an Owensboro Health hospital.
- Receive patient discharge information in real time.

Durable medical equipment vendors

- Be notified of post-acute patient DME requirements.
- Coordinate with our case managers to fulfill DME needs.

Post-acute-care and therapy facilities

- Be notified of patient post-acute placement requirements.
- Communicate with our case managers about post-acute placement details.
- Accept or decline placements.



Request access online at

OwensboroHealth.org/EpicRequest

Addiction Services



LEITCHFIELD

**Owensboro Health Medical Group
Addiction Services
Owensboro Health
Twin Lakes Medical Center
908 Wallace Ave.
Suite 201
Leitchfield, KY 42754**



Kristin
Buck, APRN

**Phone: 270-230-0212
Fax: 270-200-4478**

Allergy & Immunology

OWENSBORO

**Allergy and Asthma Specialists, PSC
3604 Wathens Crossing
Owensboro, KY 42301**

**Phone: 270-684-6144
Fax: 270-684-2944**



Lee
Clore, MD



Sara
Martin, APRN

Anesthesia



OWENSBORO

**Owensboro Health
Pre-admission Testing
Owensboro Health
Regional Hospital
1201 Pleasant Valley Rd.
Owensboro, KY 42303**



Gail
McBride, APRN



Kara
Meschko, APRN



Hannah
Wimsatt, APRN

Not Pictured:
Tara Allen, APRN

Anesthesia

GREENVILLE

S4 Anesthesia Services, PLLC
440 Hopkinsville St.
Greenville, KY 42345

Not Pictured:

Kristen Arbuckle, CRNA
Landon Atcher, CRNA
Kimberly Covington, CRNA
Mackenzie Guizio-Crockett, CRNA

April Hester, CRNA
Jeffrey Jenkins, CRNA
Christy Mills, CRNA

LEITCHFIELD

Conoloway Anesthesia
910 Wallace Ave.
Leitchfield, KY 42754

Not Pictured:

Jared Crocker, CRNA
John Gaither, CRNA

John Lyons, CRNA
Ginger Waldron, CRNA

OWENSBORO

Commonwealth Anesthesia
1201 Pleasant Valley Rd.
Owensboro, KY 42303

Paul Garner, MD
Elizabeth Lanni, MD
Jesse Miller, MD
Rauf Murtaza, MD
Stuart Rice, MD
Gavin Roth, MD
Billy Smith, MD
Adam Trotta, MD
Collin Trover, MD
Beth Abshier, CRNA
Carla Atherton, CRNA
Todd Aud, CRNA
Laressa Bazzell, CRNA
Alicia Blankendaal, CRNA
Jamie Cary, CRNA
Cortney Creech, CRNA
Daniel "Wade" Crowley, CRNA
Lee Ann Day, CRNA
Mary Edge, CRNA
Emily Edwards, CRNA
John Gaither, CRNA
John Paul Garrity, CRNA
Kathryn Guillen, CRNA
Michael Hagerman, CRNA
Nolan Hayden, CRNA
Sherri Herman, CRNA
Caitlan Hogue, CRNA
Megan Hornyak, CRNA

Tracy Kania, CRNA
Ashley Kelly, CRNA
Amanda La Favars, CRNA
Rob Loughran, CRNA
Michael Lovell, CRNA
Tyler Maples, CRNA
Matt McBride, CRNA
Joseph McVicker, CRNA
Michaela Miller, CRNA
Haley Morris, CRNA
Jonathan Nance, CRNA
Raeann Nance, CRNA
Daniel Ogaz, CRNA
Todd Oller, CRNA
Ross Pennington, CRNA
Michelle Roberts, CRNA
Lisa Scheller, CRNA
Lillian Silva, CRNA
Meghan Sims, CRNA
Sarah Stelmach, CRNA
Wes Sturgill, CRNA
Terry Sweatt, CRNA
Mitzi Szemethy, CRNA
Jacob Turner, CRNA
Juanita Turnipseed, CRNA
Marcus Williams, CRNA
Clarizel Yarbrough, CRNA

Bariatrics



OWENSBORO

**Owensboro Health Medical Group
Weight Management**
2235 Mayfair Ave.
Owensboro, KY 42301

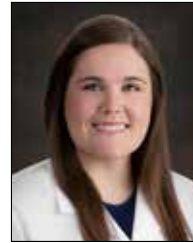
Phone: 270-688-1500
Fax: 270-688-1501



Ravi
Alapati, MD



Kristofer
Nava, MD



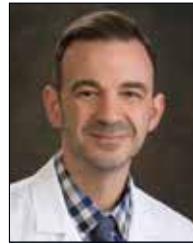
Caitlin
Heep, PA-C



Ericka
Mason, PA-C



Mike
Farina, PhD
Psychologist



Scott
Hall, RD
Dietitian

Behavioral Services



HENDERSON

**Owensboro Health Medical Group
Behavioral Services**
Henderson Healthplex
1200 Barret Blvd.
2nd Floor
Henderson, KY 42420

Phone: 270-844-8600
Fax: 270-844-8609



Rogelio
Silva, MD



Elyse
Dowdy, CSW

LEITCHFIELD

**Owensboro Health Medical Group
Behavioral Services**
**Owensboro Health
Twin Lakes Medical Center**
908 Wallace Ave.
Suite 201
Leitchfield, KY 42754

Phone: 270-230-0212
Fax: 270-230-0104



Adam
Smith, DO



Mike
Farina, PhD

Behavioral Services



MADISONVILLE

**Owensboro Health Medical Group
Behavioral Services
Madisonville Healthplex**
510 Ruby Dr.
2nd Floor
Madisonville, KY 42431

**Phone: 270-399-7900
Fax: 270-399-7912**



Keely
Dukes, APRN



Chesley
Jones, APRN

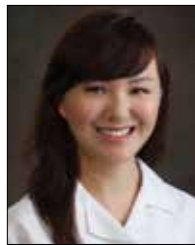


Jodie
Ellsworth, LPCC

OWENSBORO

**Owensboro Health Medical Group
Behavioral Services
Ford Medical Building**
2211 Mayfair Ave.
Suite 409
Owensboro, KY 42301

**Phone: 270-417-7980
Fax: 270-417-7989**



Jin
Amon, MD



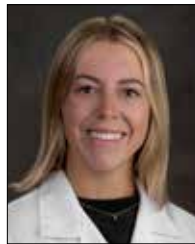
David
Dorbad, MD



Joseph
Harrison, MD



Jensen
Potenza, MD
Telemedicine



Maya
Todd, MD
Telemedicine



Daniel
Crowe, APRN



Angela
Puckett, APRN



Lori
Quinn, APRN



Ashly
Skaggs, APRN



Tiffany
Yocum, APRN



Lisa
Moore, LCSW



Becky
Moorman, LPCC

Not Pictured:
Elyse Dowdy, CSW

Behavioral Services



OWENSBORO

Owensboro Health Medical Group
Behavioral Services
Owensboro Health
Regional Hospital
1201 Pleasant Valley Rd.
7th Floor, Behavioral Health Unit
Owensboro, KY 42303



Jensen
Potenza, MD
Telemedicine



Raven
Price, MD



Daniel
Crowe, APRN



Lori
Quinn, APRN

Phone: 270-417-3700
Fax: 270-417-3709

Employee Assistance Program (EAP) and Outpatient Counseling

MADISONVILLE

Employee Assistance
Program (EAP) and
Outpatient Counseling
Multicare
444 S. Main St.
Madisonville, KY 42431



Courtney
Yeiser, LPCC

Phone: 270-688-1547
Fax: 270-688-1075

OWENSBORO

Employee Assistance
Program (EAP) and
Outpatient Counseling
Owensboro Health Healthpark
Resource Center
1006 Ford Ave.
Owensboro, KY 42301



Lori
Buckby-Reddish,
LCSW



Dave
Roark,
LPCC



Amy
Scott,
LCSW, CADC



Courtney
Yeiser,
LPCC

Phone: 270-688-1547
Fax: 270-688-1075

OWENSBORO

Owensboro Health
Regional Hospital
Employee Assistance
Program (EAP) and
Outpatient Counseling
1201 Pleasant Valley Rd.
Owensboro, KY 42303



Christa
Flamion, CSW

Phone: 270-688-1547
Fax: 270-688-1075

Behavioral Services



Employee Assistance Program (EAP) and Outpatient Counseling

POWDERLY

**Employee Assistance
Program (EAP) and
Outpatient Counseling**
Muhlenberg Healthplex
2025 W. Everly Brothers Blvd.
Suite 2A
Powderly, KY 42367



Courtney
Yeiser, LPCC

Phone: 270-688-1547

Fax: 270-688-1075

Cardiology



GREENVILLE

**Owensboro Health Medical Group
Cardiology**
**Owensboro Health Muhlenberg
Community Hospital**
440 Hopkinsville St.
2nd Floor
Greenville, KY 42345



G. Scott
Reader, MD
Interventional



Kali
McKenzie, APRN



Katie
Watkins, APRN

Phone: 270-377-2384

Fax: 270-377-2387

LEITCHFIELD

**Owensboro Health Medical Group
Cardiology**
**Owensboro Health Twin Lakes
Medical Center**
912 Wallace Ave.
Suite 105
Leitchfield, KY 42754



David
Charles, DO
Electrophysiology



Morgan
Bunch, APRN

Phone: 270-200-4356

Fax: 270-200-4537

Cardiology



OWENSBORO

Owensboro Health Medical Group
Cardiology
Pleasant Valley Medical Building
1301 Pleasant Valley Rd.
Suite 202
Owensboro, KY 42303

Phone: 270-417-7500
Fax: 270-417-7509



David
Charles, DO
Electrophysiology



Mukesh
Gupta, MD
Interventional



Michael
Kelley, MD
Non-Invasive



Johnny
Makhoul, MD
*Invasive
Non-Interventional*



Navin
Rajagopalan, MD
Heart Failure



Ashish
Rastogi, MD
Interventional



Sandeep
Sagar, MD
Electrophysiology



Kebede
Shire, MD
Interventional



Tseday
Sirak, MD
Non-Invasive



Richard
Burgan, PA-C



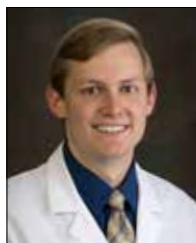
Emily
Floyd, APRN



Lillie
Goetz, PA-C



William
Howard, APRN



W. Alex
Johnson, PA-C



Dodie
Kirkendoll, APRN



Ellen
McLimore, APRN



Sarah
Winkler, APRN

Cardiology

LEITCHFIELD

Norton Heart Specialists

912 Wallace Ave.
Suite 104
Leitchfield, KY 42754

Phone: 502-584-2029

Fax: 502-238-2370



John
Kenny, MD



Dawn
Maxim, APRN

OWENSBORO

Advanced Cardiology of Owensboro

3110 Fairview Dr.
Owensboro, KY 42303

Phone: 270-240-2129

Fax: 270-240-1227



Roshan
Mathew, MD



Shirlene
Joines, APRN



Jeremy
Payne, APRN

Not Pictured:
Anjali
Cunningham,
APRN

OWENSBORO

Owensboro Heart & Vascular

1200 Breckenridge St.
Suite 101
Owensboro, KY 42303

Phone: 270-683-8672

Fax: 270-685-8233



Kishor
Vora, MD



Rebecca
Decker, APRN



Chace
Franks, APRN



Leigh Ann
Futrell, APRN

Cardiothoracic Surgery



OWENSBORO

Owensboro Health Medical Group Cardiothoracic Surgery

Pleasant Valley Medical Building
1301 Pleasant Valley Rd.

Suite 201

Owensboro, KY 42303

Phone: 270-417-7510

Fax: 270-417-7509



W. Randy
Carter, MD



J. Christian
Cash, MD



Ahmad
Chaudry, MD

Not Pictured:
Paul Moore, MD

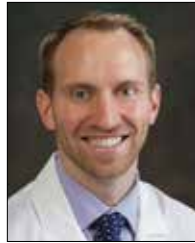
Cosmetic Surgery



OWENSBORO

**Owensboro Health Medical Group
Plastic & Reconstructive Surgery
Ford Medical Building
2211 Mayfair Ave.
Suite 305
Owensboro, KY 42301**

**Phone: 270-688-3700
Fax: 270-688-3709**



Benjamin
Kittinger, MD



Janae
Kittinger, MD



James
Tidwell, MD



Tabitha
Hall, PA-C



Jenny
Neely, APRN

Cosmetic Surgery

OWENSBORO

**Edds Cosmetic Surgery
2818 Farrell Crescent
Owensboro, KY 42301**

**Phone: 270-926-9033
Fax: 270-926-4896**



Gerald
Edds, MD

Education & Wellness



BEAVER DAM

**Owensboro Health InBalance
Diabetes Education Program
1213 N. Main St.
Beaver Dam, KY 42320**

**Phone: 270-688-4804
Fax: 270-688-1075**



Melissa Gaither,
RDN, LD,
CDCES, MLDE
Telemedicine



Sarah Renschler,
RDN, LD, CDCES



Shelby Shelby,
MS, RDN, LD,
CDCES, MLDE
Telemedicine



Jenny Young,
RDN, LD,
CDCES, MLDE
Telemedicine



BEAVER DAM

**Owensboro Health Outpatient
Nutrition Counseling**
1213 N. Main St.
Beaver Dam, KY 42320

Phone: 270-688-4804
Fax: 270-688-1075



Darci Davis,
RDN, LD
Telemedicine



Lexi Wright,
MS, RDN, LD
Telemedicine

HENDERSON

**Owensboro Health InBalance
Diabetes Education Program
Henderson Healthplex**
1200 Barret Blvd.
Henderson, KY 42420

Phone: 270-844-8600
Fax: 270-844-8795



Sarah Renschler,
RDN, LD, CDCES



Jenny Young,
RDN, LD,
CDCES, MLDE

HENDERSON

**Owensboro Health Outpatient
Nutrition Counseling
Henderson Healthplex**
1200 Barret Blvd.
Henderson, KY 42420

Phone: 270-844-8600
Fax: 270-844-8795



Lexi Wright,
MS, RDN, LD

MADISONVILLE

**Owensboro Health InBalance
Diabetes Education Program
Multicare**
444 S. Main St.
Madisonville, KY 42431

Phone: 270-821-4444
Fax: 270-821-9188



Melissa Gaither,
RDN, LD,
CDCES, MLDE



MADISONVILLE

Owensboro Health Outpatient
Nutrition Counseling
Multicare

444 S. Main St.
Madisonville, KY 42431

Phone: 270-821-4444
Fax: 270-821-9188



Melissa Gaither,
RDN, LD,
CDCES, MLDE

LEITCHFIELD

Owensboro Health InBalance
Diabetes Education Program
Owensboro Health
Twin Lakes Medical Center

908 Wallace Ave.
Leitchfield, KY 42754

Phone: 270-688-4804
Fax: 270-688-1075



Sarah Renschler,
RDN, LD, CDCES
Telemedicine



Shelby Shelby,
MS, RDN, LD,
CDCES, MLDE
Telemedicine



Jenny Young,
RDN, LD,
CDCES, MLDE
Telemedicine

OWENSBORO

Owensboro Health InBalance
Diabetes Education Program
Owensboro Health Healthpark
Health Resource Center

1006 Ford Ave.
Owensboro, KY 42301

Phone: 270-688-4804
Fax: 270-688-1075



Melissa Gaither,
RDN, LD,
CDCES, MLDE



Sarah Renschler,
RDN, LD, CDCES



Shelby Shelby,
MS, RDN, LD,
CDCES, MLDE



Jenny Young,
RDN, LD,
CDCES, MLDE



OWENSBORO

**Owensboro Health Outpatient
Nutrition Counseling
Owensboro Health Healthpark
Health Resource Center**
1006 Ford Ave.
Owensboro, KY 42301

**Phone: 270-688-4804
Fax: 270-688-1075**



Beth Cecil,
RDN, LD



Darci Davis,
RDN, LD



Lexi Wright,
MS, RDN, LD

POWDERLY

**Owensboro Health InBalance
Diabetes Education Program
Muhlenberg Healthplex**
2025 W. Everly Brothers Blvd.
Powderly, KY 42367

**Phone: 270-688-4804
Fax: 270-688-1075**



Shelby Shelby,
MS, RDN, LD,
CDCES, MLDE

POWDERLY

**Owensboro Health Outpatient
Nutrition Counseling
Muhlenberg Healthplex**
2025 W. Everly Brothers Blvd.
Powderly, KY 42367

**Phone: 270-688-4804
Fax: 270-688-1075**



Darci Davis,
RDN, LD

Emergency Medicine



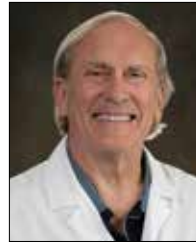
GREENVILLE

Owensboro Health Medical Group
Emergency Department
Owensboro Health Muhlenberg
Community Hospital
440 Hopkinsville St.
Greenville, KY 42345

Phone: 270-338-8332
Fax: 270-338-8333



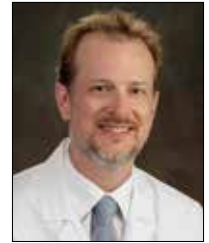
James
Coomes, MD



Thomas
Flowers, DO



Kevin
King, MD



Andrew
Pierce, MD



Rebecca
Taul, PA-C

Not Pictured:
Kimberly Cecil-Riddle, APRN
John Tomasic, APRN

OWENSBORO

Owensboro Health Medical Group
Emergency Department
Owensboro Health
Regional Hospital
1201 Pleasant Valley Rd.
Owensboro, KY 42303

Phone: 270-417-5911
Fax: 270-417-6497



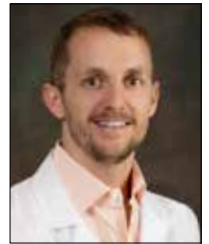
Eric
Baker, MD



Kenneth
Canant, MD



Gregory
Conner, DO



Brett
Dickens, MD



Seth
Faull, DO



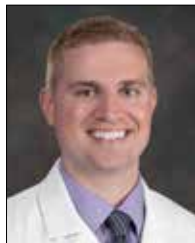
Gregory
Fletcher, MD



Elvis
Joseph, MD



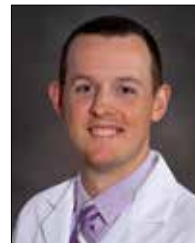
Matthew
Nelson, DO



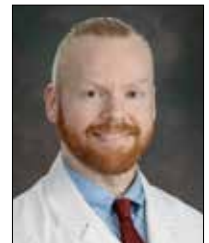
Justin
Pile, DO



Katherine
Schulman, MD



Jeff
Tobolski, DO



Michael
Wray, DO

Emergency Medicine



OWENSBORO (Continued)

**Owensboro Health Medical Group
Emergency Department
Owensboro Health
Regional Hospital**
1201 Pleasant Valley Rd.
Owensboro, KY 42303

**Phone: 270-417-5911
Fax: 270-417-6497**



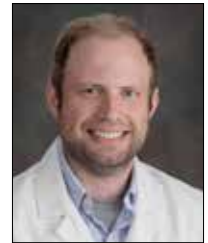
Hannah
Young, MD



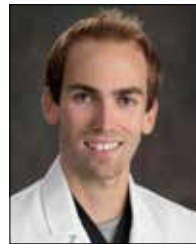
Christopher
Cooper, PA-C



Amanda
Howard, PA-C



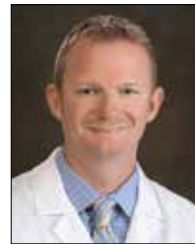
Ronald
Karcz, PA-C



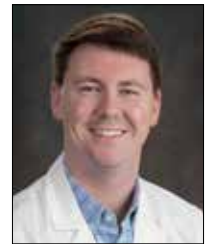
Reagan
Leach, PA-C



Scott
McMillen, PA-C



Nicholas
Morris, PA-C



Aaron
Schlenker, PA-C



Aidan
Washer, PA-C

Not Pictured:
Bethany Burkhart, MD

Emergency Medicine

LEITCHFIELD

**Concord Medical Group
Owensboro Health Twin Lakes
Medical Center**
910 Wallace Ave.
Leitchfield, KY 42754

**Phone: 270-259-9400
Fax: 270-259-9502**

Not Pictured:

Justin Chaltry, DO
Bradford Cottrell, MD
Randy Florendo, MD
Charles Jarboe, MD
Aamir Nawaz, MD
George Nobile, MD
Paul Passafiume, MD
Rameshbhai Patel, MD
Jonathan Rey, MD
Dan Sotingeanu, MD

Todd Wical, DO
Ted Fizer, APRN
Jeri Humphries, PA-C
Kayla Reinhart, APRN
Jennifer Sallee, FNP-BC
Dawn Shelby, APRN
Dana Smallwood, FNP-BC
Eric Townsend, APRN
Benjamin Williams, PA
Christina Wills, APRN

Endocrinology



OWENSBORO

**Owensboro Health Medical Group
Diabetes & Endocrinology
Breckenridge Medical Building
1000 Breckenridge St.
Suite 200
Owensboro, KY 42303**

**Phone: 270-688-3500
Fax: 270-688-3501**



Mary
De Croos, MD



Theresa
Lanham, DO



Betty
Villafuerte, MD

Endocrinology

OWENSBORO

**Premier Medical Group
1030 Burlew Blvd.
Owensboro, KY 42303**

**Phone: 270-926-2273
Fax: 270-686-2260**



Bernard
Buchanan, MD



Matthew
Finley, PA-C



Aileen
Smith, APRN



Kathy
Thiesse, APRN

Family Medicine



BEAVER DAM

**Owensboro Health Medical Group
Family Medicine
1213 N. Main St.
Beaver Dam, KY 42320**

**Phone: 270-274-4771
Fax: 270-274-4884**



Courtney
Keller, APRN

Family Medicine



BIG CLIFTY

**Owensboro Health Medical Group
Family Medicine**
9847 Elizabethtown Rd.
Big Clifty, KY 42712

**Phone: 270-242-2000
Fax: 270-242-2100**



Heather
Parsley, APRN

CALHOUN

**Owensboro Health Medical Group
Family Medicine**
145 E. Second St.
Calhoun, KY 42327

**Phone: 270-273-3293
Fax: 270-273-3294**



Lisa
Vaught, APRN

CANEYVILLE

**Owensboro Health Medical Group
Family Medicine**
301 Sunset Dr.
Caneyville, KY 42721

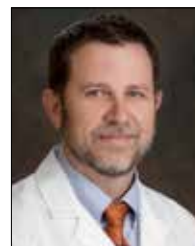
**Phone: 270-879-3711
Fax: 270-879-8674**



Gregory
Koo, MD



Robert
McClure, MD



Todd
Bullock, APRN

HENDERSON

**Owensboro Health Medical Group
Family Medicine
Henderson Healthplex**
1200 Barret Blvd.
Henderson, KY 42420

**Phone: 270-844-8600
Fax: 270-844-8610**



Jon
Hall, MD



Dennis Lee
Newberry, MD



David
Utley, DO



Jama
Patterson, APRN



Sheri
Pullin, APRN

Family Medicine



LEITCHFIELD

Owensboro Health Medical Group
Family Medicine
Owensboro Health
Twin Lakes Medical Center
912 Wallace Ave.
Suite 102
Leitchfield, KY 42754



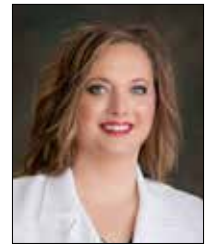
Ivan
Escudero, MD



Blake
Clemons, APRN



Cari
Johnson, APRN



Jamie
Niehaus, APRN

Phone: 270-259-8888

Fax: 270-259-4096

MADISONVILLE

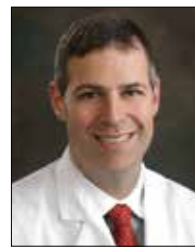
Owensboro Health Medical Group
Family Medicine
Multicare
444 S. Main St.
Madisonville, KY 42431



Eden
Elfrink, DO
Lifestyle Medicine



John
Farmer, MD



Timothy
McGhee, MD



Mark
Tackett, MD

Phone: 270-821-4444

Fax: 270-821-3446



Peggy
Harris, APRN



Regina
Sisk, APRN



Jeana
Townsend, APRN

OWENSBORO

Owensboro Health Medical Group
Family Medicine
Breckenridge Medical Building
1000 Breckenridge St.
Suite 401
Owensboro, KY 42303



Stacey
Fazenbaker, MD
Functional Medicine



Jennifer
Tuck-Chappill, MD



Candace
Dulabh, PA-C



Tisha
Higgs, APRN

Phone: 270-688-4401

Fax: 270-688-4409

Family Medicine



OWENSBORO

**Owensboro Health Medical Group
Family Medicine
Parrish Medical Building
811 E. Parrish Ave.
Suite 101
Owensboro, KY 42303**

**Phone: 270-684-1145
Fax: 270-684-1190**



Heather
Condon, MD



Rebecca
McKindles, MD



Samantha
Chamberlain,
APRN



Susan
Daniel, DNP,
APRN



Magan
Fiorella, APRN



Meghan
McKinley, APRN

OWENSBORO

**Owensboro Health Medical Group
Family Medicine
Triplett Medical Building
1325 Triplett St.
Owensboro, KY 42303**

**Phone: 270-686-8500
Fax: 270-685-5467**



Benjamin
Keeley, MD



Ronald
Taylor, MD



Justen
Bickett, APRN



Calla
Hass, APRN

Family Medicine



OWENSBORO

Owensboro Health Family Medicine
Residency Clinic
Parrish Medical Building
811 E. Parrish Ave.
Suite 102
Owensboro, KY 42303

Phone: 270-688-2077
Fax: 270-688-2078



Darby
Cole, MD



Stephanie
Hayden, MD
Pediatrics



Hayat
Itani, MD



Abinash
Joshi, MD



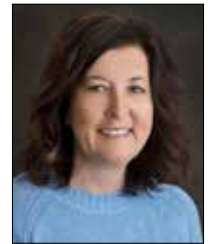
Damon
Kolok, MD



James
Price, DO



Marshall
Prunty, MD



Melissa
Duvall, LPCC
Behavioral Health



Shirl
Nafziger-Lyne,
MSW, LCSW
Behavioral Health

Family Medicine



OWENSBORO

**Owensboro Health Family Medicine
Residency Clinic**
Parrish Medical Building
811 E. Parrish Ave.
Suite 102
Owensboro, KY 42303

Family Medicine Residents
Class of 2024



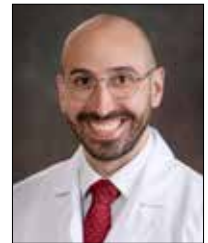
Eric
Carlson, DO



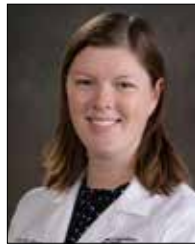
Kirsi
Kuiper, MD



Parul
Pahal, MD



Zachary
Panzarella, DO



Libby
Sisson, MD



Erin
Webb, DO

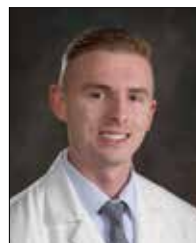
OWENSBORO

**Owensboro Health Family Medicine
Residency Clinic**
Parrish Medical Building
811 E. Parrish Ave.
Suite 102
Owensboro, KY 42303

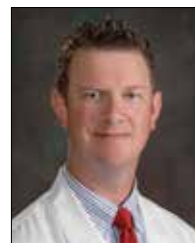
Family Medicine Residents
Class of 2025



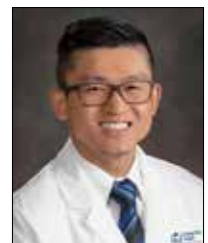
Millie
Babbs, MD



Avery
Buckles, DO



Brian
Christensen, DO



Zhen
Lu, MD



Matthew
Pearson, MD



Eric
Stewart, MD

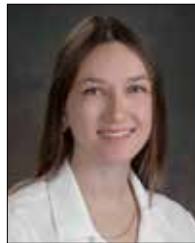
Family Medicine



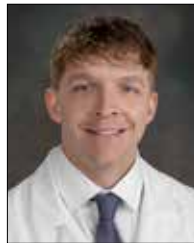
OWENSBORO

**Owensboro Health Family Medicine
Residency Clinic**
Parrish Medical Building
811 E. Parrish Ave.
Suite 102
Owensboro, KY 42303

Family Medicine Residents
Class of 2026



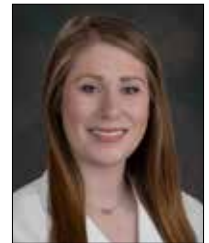
Victoria
Amelyanchyk, MD



Troy
Hamner, MD



Hamid
Emman Helmi, MD



Morgan
Murphy, DO



Mohitha
Obulasetty, DO



Andrew
Parker, DO

POWDERLY

**Owensboro Health Medical Group
Family Medicine**
Muhlenberg Healthplex
2025 W. Everly Brothers Blvd.
Suite 2A
Powderly, KY 42367

Phone: 270-377-2626
Fax: 270-377-2777



Michael
Gabbard, DO



Stephanie
Whitmer, MD



Mandy
Newman, APRN



Tabitha
Taylor, APRN

TELL CITY

**Owensboro Health Medical Group
Family Medicine**
Lincoln Park Plaza
27 E. Hwy. 66
Tell City, IN 47586

Phone: 812-395-2011
Fax: 812-395-2012



Kim
Harley, APRN



Andrea
Marvel, APRN

Family Medicine

LEITCHFIELD

Gay Fulkerson, MD, PSC

310 S. Main St.
Leitchfield, KY 42754

Phone: 270-259-4666
Fax: 270-259-0061



Gay
Fulkerson, MD

LEITCHFIELD

Ray Begay, MD

400 Mill St.
Leitchfield, KY 42754

Phone: 270-259-0352
Fax: 270-287-0157

Not Pictured:
Ray Begay, MD

OWENSBORO

Bluegrass Internal Medicine

3346 Professional Park Dr.
Owensboro, KY 42303

Phone: 270-685-1066
Fax: 270-713-0227



Steven
Roby, MD

OWENSBORO

Jeremy Bradley, MD

3122 Commonwealth Ct.
Owensboro, KY 42303

Phone: 270-684-7711
Fax: 270-684-7753



Jeremy
Bradley, MD

OWENSBORO

Premier Medical Group

1030 Burlew Blvd.
Owensboro, KY 42303

Phone: 270-926-2273
Fax: 270-686-2260



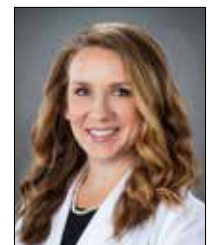
Bradley
King, MD



Brandy
Blue, DPN, APRN



Shannon
Gleason, DPN,
APRN



Brianna
McCarty, APRN

Family Medicine

OWENSBORO (Continued)

Premier Medical Group
1030 Burlew Blvd.
Owensboro, KY 42303

Phone: 270-926-2273
Fax: 270-686-2260



Angela
Rogers, APRN

OWENSBORO

Tamberly McCoy, MD
2601 New Hartford Rd.
Owensboro, KY 42303

Phone: 270-926-1150
Fax: 270-926-2796



Tamberly
McCoy, MD

Gastroenterology & Hepatology



OWENSBORO

Owensboro Health Medical Group
Gastroenterology
& Hepatology
Pleasant Valley Medical Building
1301 Pleasant Valley Rd.
Suite 401
Owensboro, KY 42303

Phone: 270-417-7800
Fax: 270-417-7809



Kenneth
Camacho, MD



Francis
DuFrayne, MD



Kati
Bean, APRN



Morgan
Cecil, APRN



Andrea
Harrison, APRN



Sarah
Keller, APRN



Kim
Marshall, APRN

Not Pictured:
Ranjith Wijeratne, MD

Gastroenterology & Hepatology

OWENSBORO

Brett Davis, MD

1000 Breckenridge St.
Suite 302A
Owensboro, KY 42303

Phone: 270-228-0210

Fax: 270-228-2089



Brett
Davis, MD

Geriatrics



OWENSBORO

**Owensboro Health Medical Group
Family Medicine**

Breckenridge Medical Building
1000 Breckenridge St.
Suite 401
Owensboro, KY 42303

Phone: 270-688-4401

Fax: 270-688-4409



Andrew
Collins, DO



Aziz
Mehrzad, MD



Kelsey
Grothouse, APRN

Hematology & Oncology



BEAVER DAM

**Owensboro Health Medical Group
Hematology & Oncology**

1213 N. Main St.
Beaver Dam, KY 42320

Phone: 270-688-3445

Fax: 270-688-3444



Jewraj
Maheshwari, MD



Megan
Fisher, APRN

GREENVILLE

**Owensboro Health Medical Group
Hematology & Oncology**

Muhlenberg Medical Building
420 Hopkinsville St.
Greenville, KY 42345

Phone: 270-688-3445

Fax: 270-688-3444



J. Randall
Thomas, MD



Melissa
Hoegg, APRN



LEITCHFIELD

**Owensboro Health Medical Group
Hematology & Oncology
Owensboro Health
Twin Lakes Medical Center**
912 Wallace Ave.
Suite 105
Leitchfield, KY 42754



Megan
Fisher, APRN

Phone: 270-688-3445

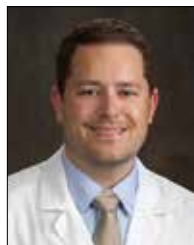
Fax: 270-688-3444

OWENSBORO

**Owensboro Health Medical Group
Hematology & Oncology
Breckenridge Medical Building**
1000 Breckenridge St.
Suite 201
Owensboro, KY 42303

Phone: 270-688-3445

Fax: 270-688-3444



Jacob
Hodskins, MD



Jewraj
Maheshwari, MD



J. Randall
Thomas, MD



Megan
Fisher, APRN



Melissa
Hoegg, APRN

TELL CITY

**Owensboro Health Medical Group
Hematology & Oncology
Perry County Memorial Hospital**
8885 IN-237
Tell City, IN 47586

Phone: 812-547-0106

Fax: 812-547-0104



Jewraj
Maheshwari, MD

Hospitalists



GREENVILLE

**Owensboro Health Medical Group
Hospitalists**
**Owensboro Health Muhlenberg
Community Hospital**
440 Hopkinsville St.
2nd Floor
Greenville, KY 42345



Heather
Garrett, MD



Akshay
Pathak, MD



Michael
Garrett, APRN



Holly
Payne, APRN

Phone: 270-338-8000

Fax: 270-338-8278

LEITCHFIELD

**Owensboro Health Medical Group
Hospitalists**
**Owensboro Health
Twin Lakes Medical Center**
910 Wallace Ave.
Leitchfield, KY 42754



Priyank
Chauhan, MD



Kirk
Robison, PA-C

Phone: 270-259-9555

Fax: 270-259-1669

Not Pictured:

Tanisha Williams, APRN

Hospitalists



OWENSBORO

**Owensboro Health Medical Group
Hospitalists
Owensboro Health
Regional Hospital
1201 Pleasant Valley Rd.
7th Floor
Owensboro, KY 42303**

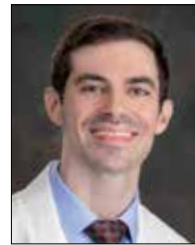
**Phone: 270-417-4700
Fax: 270-417-4709**



Nino
Cavataio, MD



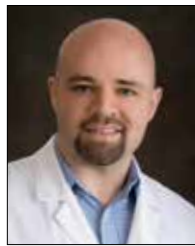
George
Dunham, MD



Collin
Durham, MD



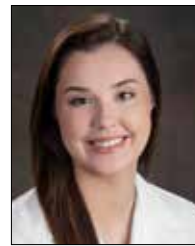
John
Ekong, MD



LK
Ferrell, DO



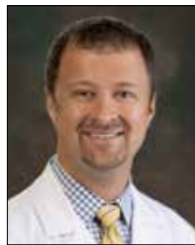
Jacob
Hanin, MD



Madison
Hardesty, MD



Brent
Hayden, MD



Andrew
Higdon, MD



Rene
Ndzi, DO



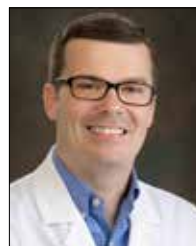
Dennis
Paskal, MD



Khalil
Soboh, MD



Adrian
Yeiser, MD



Scott
Bradley, APRN



Matthew
Johnson, APRN



Ramona
Rhodes, APRN



Amanda
Roby, APRN



Ashley
Scott, APRN



Deanna
Wiggins, APRN

**Not Pictured:
Sheri Patel, MD**

Infectious Disease



OWENSBORO

Owensboro Health Medical Group
Infectious Disease
Pleasant Valley Medical Building
1301 Pleasant Valley Rd.
Suite 405
Owensboro, KY 42303



David
Kline, MD

Phone: 270-417-7850
Fax: 270-417-7859

Internal Medicine



LEITCHFIELD

Owensboro Health Medical Group
Internal Medicine
Owensboro Health
Twin Lakes Medical Center
912 Wallace Ave.
Suite 101
Leitchfield, KY 42754



Aayushma
Shah, MD



Ashley
Flener, APRN



Clay
Vincent, APRN

Phone: 270-259-9316
Fax: 270-259-6571

MADISONVILLE

Owensboro Health Medical Group
Internal Medicine
Multicare
444 S. Main St.
Madisonville, KY 42431



Craig
Amundson, MD

Phone: 270-821-4444
Fax: 270-821-3446

OWENSBORO

Owensboro Health Medical Group
Internal Medicine
Triplett Medical Building
1325 Triplett St.
Owensboro, KY 42303



Austin
Webb, MD

Phone: 270-686-8500
Fax: 270-685-5467

Internal Medicine



POWDERLY

Owensboro Health Medical Group
Internal Medicine
Muhlenberg Healthplex
2025 W. Everly Brothers Blvd.
Suite 2A
Powderly, KY 42367

Phone: 270-377-2626
Fax: 270-377-2777



Ashley
Gabbard, DO



Bracken C.
Lewis, MD

Internal Medicine

OWENSBORO

Bluegrass Internal Medicine
3346 Professional Park Dr.
Owensboro, KY 42303

Phone: 270-685-1066
Fax: 270-713-0227



Jonathan
Blandford, DO



Matheis
Carrico, MD



Patrick
Gipe, MD



David
Johnson, MD



Ramez
Salamah, MD

OWENSBORO

Jinah Sayed, MD
2200 E. Parrish Ave.
Bldg. C, Suite 203
Owensboro, KY 42303

Phone: 270-852-1636
Fax: 270-686-0056

Not Pictured:
Jinah Sayed, MD

Internal Medicine

OWENSBORO

Vineyard Primary Care
3805 Fairview Dr.
Owensboro, KY 42303

Phone: 270-240-2305
Fax: 270-240-2252



Jeremy
Luckett, MD



Jamie
Bisel, PA-C



Kelsey
Pedley, APRN



Sylvia
Sweatt, APRN



Tasia
Thompson, APRN

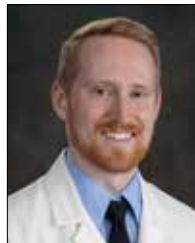
Lifestyle Medicine



MADISONVILLE

Owensboro Health Medical Group
Family Medicine
Multicare
444 S. Main St.
Madisonville, KY 42431

Phone: 270-821-4444
Fax: 270-821-3446

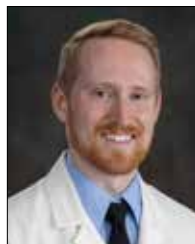


Eden
Elfrink, DO

OWENSBORO

Owensboro Health Medical Group
Lifestyle Medicine
Owensboro Health Healthpark
1006 Ford Ave.
Owensboro, KY 42301

Phone: 270-688-2110
Fax: 270-688-2111



Eden
Elfrink, DO

Long-Term Care



GREENVILLE

Owensboro Health Muhlenberg
Community Hospital
Long-Term Care
Owensboro Health Muhlenberg
Community Hospital
440 Hopkinsville St.
Greenville, KY 42345



Meredith
Harkins, APRN

Phone: 270-338-8434
Fax: 270-338-8466

Maternal-Fetal Medicine



OWENSBORO

Owensboro Health Medical Group
Maternal-Fetal Medicine
Pleasant Valley Medical Building
1301 Pleasant Valley Rd.
Suite 301
Owensboro, KY 42303



Kiesha
Benn, MD



Thomas
Tabb, MD

Phone: 270-417-7720
Fax: 270-417-7750

Neonatal-Perinatal



OWENSBORO

Owensboro Health Medical Group
Neonatal & Perinatal
Owensboro Health
Regional Hospital
1201 Pleasant Valley Rd.
3rd Floor
Owensboro, KY 42303



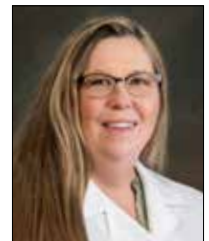
Heather
Brown, MD



Bridget
Burshears, MD



Jami
Block, APRN



Rhonda
Chess, APRN

Phone: 270-417-5314
Fax: 270-417-0165



Alison
Eblen, APRN



David
Price, APRN

Nephrology

LEITCHFIELD

Nephrology Associates of Central Kentucky

400 Mill St.
Leitchfield, KY 42754

Phone: 270-765-5112
Fax: 270-737-9252

Not Pictured:
Khalid Bhatti, MD
Mustafa Muhammad, MD

LEITCHFIELD

Ohio Valley Nephrology Associates PSC Owensboro Health Twin Lakes Medical Center

912 Wallace Ave.
Suite 104
Leitchfield, KY 42754

Phone: 270-287-0001
Fax: 270-287-0005



Hamza
Arif, MD



Dhiren
Haria, MD



Hassaan
Iftikhar, MD



Maryam
Saleem, MD

Not Pictured:
Dustie Barnett, APRN

OWENSBORO

Ohio Valley Nephrology Associates PSC

1930 E. Parrish Ave.
Owensboro, KY 42303

Phone: 270-689-1919
Fax: 270-689-1990



Hamza
Arif, MD



Dhiren
Haria, MD



Hassaan
Iftikhar, MD



Maryam
Saleem, MD



Wanda
Winkler, APRN

Not Pictured:
Dustie Barnett, APRN

Neurohospitalists



OWENSBORO

Owensboro Health Medical Group
Neurohospitalists
Owensboro Health
Regional Hospital
1201 Pleasant Valley Rd.
Owensboro, KY 42303

Phone: 270-417-7830
Fax: 270-417-7839



Lori
McIntosh, DO

Neurological Surgery

OWENSBORO

Neurosurgical Consultants
2200 E. Parrish Ave.
Bldg. D, Suite 100
Owensboro, KY 42303

Phone: 270-688-1770
Fax: 270-688-1780



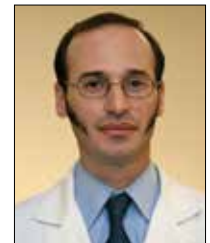
Harold
Cannon, MD



David
Eggers, MD



Eric
Goebel, MD



Neil
Troffkin, MD



David
Weaver, MD



Jeremy
Holman, PA-C



Claire
Stevenson, APRN



John
Umbach, PA-C



Andrew
Venditti, PA-C



Holly
Young, PA-C

Not Pictured:
Kutluay Uluc, MD
Jennifer Brenner, APRN
Jeffrey Brown, PA-C
Tara Clark, APRN
Hailey Craig Jones, PA-C
Lauren Juric, PA-C
Jacob Mischler, PA-C

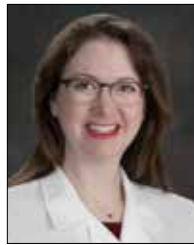
Neurology



OWENSBORO

**Owensboro Health Medical Group
Neurology**
Pleasant Valley Medical Building
1301 Pleasant Valley Rd.
Suite 300
Owensboro, KY 42303

Phone: 270-417-7830
Fax: 270-417-7839



Caroline
Germany, MD



James
Lamb, MD



Jeanie
McCormack, DO



Barry
Menna, DO



Nicole
Allen, APRN

Not Pictured:
Karla Ledoux, MD

Neurology

LEITCHFIELD

**Owensboro Health Twin Lakes
Medical Center**
912 Wallace Ave.
Suite 104
Leitchfield, KY 42754

Phone: 270-769-6330
Fax: 270-766-1032

Not Pictured:
Noel Reloj, MD

Neuropsychology

EVANSVILLE

Jeff W. Gray, PhD
1154 Washington Square
Evansville, IN 47715

Phone: 812-477-0407
Fax: 812-477-1728

Not Pictured:
Jeff Gray, PhD

Obstetrics & Gynecology

HENDERSON

Owensboro Health Medical Group
Obstetrics & Gynecology
Henderson Healthplex
1200 Barret Blvd.
Henderson, KY 42420

Phone: 270-844-8600
Fax: 270-844-8610

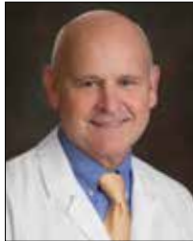


Eric
Griffin, MD
Gynecology

LEITCHFIELD

Owensboro Health Medical Group
Obstetrics & Gynecology
Owensboro Health
Twin Lakes Medical Center
910 Wallace Ave.
Suite 302
Leitchfield, KY 42754

Phone: 270-259-2700
Fax: 270-259-2717



James
Buck, MD



Mark
Lee, DO



Jenny
Hardesty, APRN



OWENSBORO

Owensboro Health Medical Group
Women's Pavilion
The Springs Health Centre
2200 E. Parrish Ave.
Bldg. B, Suite 201
Owensboro, KY 42303

Phone: 270-926-3700
Fax: 270-926-0368



Angela
Dawson, MD



Eric
Griffin, MD
Gynecology



Andrea
Moore, MD



Billie
Zody, MD



Darla
Alvey, APRN



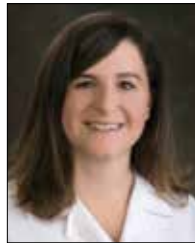
Megan
Burch, APRN



Kaitlin W.
Hawkins,
DPN, APRN



Susan
Johnson,
CNM, APRN



Katie
Melvin,
CNM, APRN



Lauren
Shelton, APRN



Ann
Watson, APRN

Obstetrics & Gynecology



POWDERLY

**Owensboro Health Medical Group
Obstetrics & Gynecology
Muhlenberg Healthplex
2025 W. Everly Brothers Blvd.
Powderly, KY 42367**

**Phone: 270-377-2600
Fax: 270-377-2610**



Hilary
Vandiver, APRN

Obstetrics & Gynecology

OWENSBORO

**Richard C. Good, MD
3240 Mt. Moriah Ave.
Owensboro, KY 42303**

**Phone: 270-926-4449
Fax: 270-926-4554**



Richard
Good, MD

OWENSBORO

**Summit Medical Specialists
3821 Vincent Station Dr.
Owensboro, KY 42303**

**Phone: 270-478-5334
Fax: 270-215-0500**



Sydni
Crowell, MD



Suzanne
Rashidian, DO

OWENSBORO

**Women's Healthcare Partners
2851 New Hartford Rd.
Owensboro, KY 42303**

**Phone: 270-688-6035
Fax: 270-688-6056**



Elizabeth
Ottman, MD



Lisa
Wimsatt,
CNM, APRN

Obstetrics & Gynecology Hospitalists

OWENSBORO

OBHG Kentucky, PSC
1201 Pleasant Valley Rd.
Owensboro, KY 42303

Phone: 270-417-5340
Fax: 270-417-5309



Elton
Fennell, MD



Kim
Rashada, MD



Louis
Riley, MD

Not Pictured:

Teresa Brown, MD
Denise Bruneau, MD
Elizabeth Elkinson, MD
Myra Henderson, DO

Keith Hewitt, MD
Maria Smith, MD
Joshua Stevens, MD

Occupational Medicine



HENDERSON

Owensboro Health Medical Group
Occupational Medicine
Henderson Healthplex
1200 Barret Blvd.
Henderson, KY 42420

Phone: 270-844-8600
Fax: 270-844-8610



Zandra
Petway, MD



Gayle
Rhodes, MD



Daniel
Best, APRN



Nicole
French, APRN



Tina
Holbrook, APRN



Nichole
Mannahan, APRN



Haley
Rascoe, APRN

LEITCHFIELD

Owensboro Health Medical Group
Occupational Medicine
1895 Elizabethtown Rd.
Leitchfield, KY 42754

Phone: 270-230-0182
Fax: 270-230-1420



Zandra
Petway, MD



Gayle
Rhodes, MD



Cynthia
Veyel, APRN

Occupational Medicine



MADISONVILLE

**Owensboro Health Medical Group
Occupational Medicine
Madisonville Healthplex**
510 Ruby Dr.
Madisonville, KY 42431

**Phone: 270-399-7727
Fax: 270-399-7823**



Alicia
Terry, PA-C

OWENSBORO

**Owensboro Health Medical Group
Occupational Medicine
Ford Medical Building**
2211 Mayfair Ave.
Suite 102
Owensboro, KY 42301

**Phone: 270-688-1351
Fax: 270-683-3420**



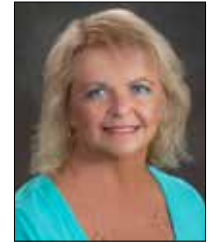
Zandra
Petway, MD



Gayle
Rhodes, MD



Daniel
Best, APRN



Kim
Harley, APRN

POWDERLY

**Owensboro Health Medical Group
Occupational Medicine
Muhlenberg Healthplex**
2025 W. Everly Brothers Blvd.
Powderly, KY 42367

**Phone: 270-377-2600
Fax: 270-377-2779**



Zandra
Petway, MD



Gayle
Rhodes, MD



Gabrielle
Harris, APRN



April
Hollis, APRN



Ashley
Houchin, APRN



Lacey
Johnson, APRN



Rachel
McDonald, APRN



Jamie
Nance, APRN



Tracey
Sloan, APRN



Kylee
Stroud, APRN

Occupational Medicine



TELL CITY

**Owensboro Health Medical Group
Occupational Medicine**
Lincoln Park Plaza
27 E. Hwy. 66
Tell City, IN 47586

**Phone: 812-395-2011
Fax: 812-395-2012**



Kim
Harley, APRN

Ophthalmology

OWENSBORO

Physicians Eye Center
2845 Farrell Crescent
Owensboro, KY 42303

**Phone: 270-926-3297
Fax: 270-926-7325**



David
Jones, MD



Mark
Millsap, MD

Oral & Maxillofacial Surgery

OWENSBORO

**Owensboro Center for Oral and
Maxillofacial Surgery**
2816 Veach Rd.
Suite 405
Owensboro, KY 42303

**Phone: 270-926-6100
Fax: 270-926-6195**



John
Hammen, DMD

OWENSBORO

Tri-State Oral Surgery, LLC
2054 E. Parrish Ave.
Unit B
Owensboro, KY 42303

**Phone: 270-208-9005
Fax: 812-401-3600**



Chase
Andreason, DMD



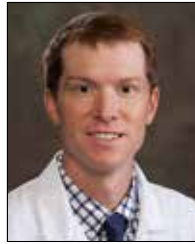
Steven
Ledford, DDS



BEAVER DAM

Owensboro Health Medical Group
Orthopedics & Sports Medicine
1213 N. Main St.
Beaver Dam, KY 42320

Phone: 270-417-7940
Fax: 270-417-7949



Adam
Barnard, PA-C
Telemedicine



Lauren
Mahoney, PA-C
Telemedicine

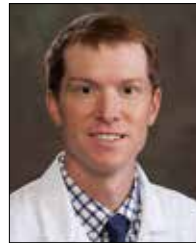
HENDERSON

Owensboro Health Medical Group
Orthopedics & Sports Medicine
Henderson Healthplex
1200 Barret Blvd.
Henderson, KY 42420

Phone: 270-417-7940
Fax: 270-417-7949



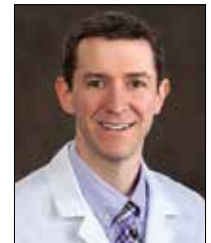
Reid
Wilson, MD



Adam
Barnard, PA-C



Katie
Bowlds, APRN



Ryan
Coyne, PA-C



Vincent
Gizzi, PA-C



Lauren
Mahoney, PA-C

LEITCHFIELD

Owensboro Health Medical Group
Orthopedics & Sports Medicine
Owensboro Health
Twin Lakes Medical Center
908 Wallace Ave.
Suite 109
Leitchfield, KY 42754

Phone: 270-230-0124
Fax: 270-230-0157



Isaac
Miller, MD
Sports Medicine



Ted
Rogers, MD

Orthopedics & Sports Medicine



MADISONVILLE

**Owensboro Health Medical Group
Orthopedics & Sports Medicine
Madisonville Healthplex**
510 Ruby Dr.
Madisonville, KY 42431

**Phone: 270-417-7940
Fax: 270-417-7949**



Anthony
McBride, MD



Terry
McPherson, PA-C

OWENSBORO

**Owensboro Health Medical Group
Orthopedics & Sports Medicine
Pleasant Valley Medical Building**
1301 Pleasant Valley Rd.
Suite 500
Owensboro, KY 42303

**Phone: 270-417-7940
Fax: 270-417-7949**



Alexander
Brown, MD



Scott
Farnar, MD



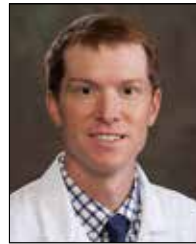
Anthony
McBride, MD



Justis
Stolz, MD
Sports Medicine



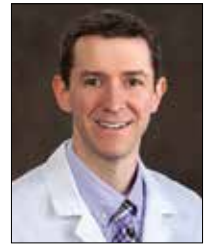
Reid
Wilson, MD



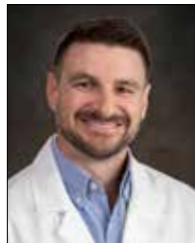
Adam
Barnard, PA-C



Katie
Bowlds, APRN



Ryan
Coyne, PA-C



Vincent
Gizzi, PA-C



Lauren
Mahoney, PA-C

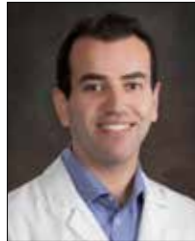
Orthopedics & Sports Medicine



POWDERLY

Owensboro Health Medical Group
Orthopedics & Sports Medicine
Muhlenberg Healthplex
2025 W. Everly Brothers Blvd.
Powderly, KY 42367

Phone: 270-377-2600
Fax: 270-377-2778



Abdalnasser
Zayed, MD



Emily
Townes, PA-C

TELL CITY

Owensboro Health Medical Group
Orthopedics & Sports Medicine
Riverfront Medical Building
421 7th St.
Tell City, IN 47586

Phone: 812-547-7448
Fax: 270-417-7949



Scott
Farner, MD

Orthopedics & Sports Medicine

OWENSBORO

Advanced Center for
Orthopedics & Sports Medicine
2780 Frederica St.
Owensboro, KY 42301

Phone: 270-926-4100
Fax: 270-684-4678



David
Boles, MD



Geoffrey
Hulse, MD



William
Martin, MD



Charles
Milem, MD



R. Keith
Moore, MD



Joseph A.
Polio, MD



Joseph L.
Polio, MD



William
Polio, MD

Orthopedics & Sports Medicine

OWENSBORO *(Continued)*

**Advanced Center for
Orthopedics & Sports Medicine**
2780 Frederica St.
Owensboro, KY 42301

Phone: 270-926-4100
Fax: 270-684-4678



Lori
Bretschneider,
APRN



Laura
Haga, APRN



Taryn
Polio, PA-C

Otolaryngology



LEITCHFIELD

**Owensboro Health Medical Group
Ear Nose and Throat
Owensboro Health Twin Lakes
Medical Center**
910 Wallace Ave.
Suite 207
Leitchfield, KY 42754

Phone: 270-259-2714
Fax: 270-259-3593



Casey
Hay, MD



Cindy
Overby, APRN

OWENSBORO

**Owensboro Health Medical Group
Ear Nose and Throat
Breckenridge Medical Building**
1000 Breckenridge St.
Suite 303
Owensboro, KY 42303

Phone: 270-688-2720
Fax: 270-688-2729



Cindy
Overby, APRN

Pain Management



GREENVILLE

**Owensboro Health Medical Group
Pain Management
Owensboro Health Muhlenberg
Community Hospital**
440 Hopkinsville St.
2nd Floor
Greenville, KY 42345



Cristina
Lamar, DO



Bradly
Newcom, MD



Dustton
Walker,
DNP, APRN

Phone: 270-338-8392

Fax: 270-338-8585

HENDERSON

**Owensboro Health Medical Group
Pain Management**
3135 Zion Rd.
Henderson, KY 42420



Benjamin
Smith, DO

Phone: 270-826-9444

Fax: 270-844-8797

MADISONVILLE

**Owensboro Health Medical Group
Pain Management
Madisonville Healthplex**
510 Ruby Dr.
Madisonville, KY 42431



Bradly
Newcom, MD



Dustton
Walker,
DNP, APRN

Phone: 270-399-7900

Fax: 270-399-7911

OWENSBORO

**Owensboro Health Medical Group
Pain Management
Breckenridge Medical Building**
1000 Breckenridge St.
Suite 205
Owensboro, KY 42303



Cristina
Lamar, DO



Jason
Lee, MD



Benjamin
Smith, DO

Phone: 270-688-3550

Fax: 270-688-3559

Pain Management

LEITCHFIELD

Owensboro Health Twin Lakes Medical Center Pain Management Group
Owensboro Health Twin Lakes Medical Center
908 Wallace Ave.
Leitchfield, KY 42754



Shawn
Sikka, MD



Tara
Meredith, APRN

Phone: 270-259-9405
Fax: 270-230-8655

OWENSBORO

Nadar Pain Care
2816 Veach Rd.
Owensboro, KY 42303

Phone: 270-684-7179
Fax: 270-713-0245

Not Pictured:
Vinayak Nadar, MD

OWENSBORO

Pain Management Centers of America
3332 Villa Point Dr.
Suite 104
Owensboro, KY 42303



Suk Ki
Kim, MD

Phone: 270-684-5679
Fax: 270-684-5753

Palliative Care



OWENSBORO

Owensboro Health Medical Group Palliative Care
Owensboro Health Regional Hospital
1201 Pleasant Valley Rd.
7th Floor
Owensboro, KY 42303



Selena
Krueger, APRN
Inpatient

Phone: 270-688-4401
Fax: 270-417-4709

Pathology

LEITCHFIELD

Owensboro Pathology
Owensboro Health
Twin Lakes Medical Center
910 Wallace Ave.
Leitchfield, KY 42754

Phone: 270-259-9496
Fax: 270-259-9498

Not Pictured:
Brian Ward, MD

OWENSBORO

Owensboro Pathology
Owensboro Health
Regional Hospital
1201 Pleasant Valley Rd.
Owensboro, KY 42303

Phone: 270-417-6530
Fax: 270-417-6509



Jason
Mills, MD

Not Pictured:
Brian Ward, MD

Pediatric Cardiology

OWENSBORO

**Cincinnati Children's Joint
Pediatric and Congenital Heart
Program with Kentucky
Children's Hospital**
Pleasant Valley Medical Building
1301 Pleasant Valley Rd.
Suite 202
Owensboro, KY 42303

Phone: 502-584-3200, Option 9
Fax: 502-584-3333



Craig
Alexander, MD
*Pediatric Cardiology &
Adult Congenital
Heart Disease*



Brad
Keller, MD
*Pediatric Cardiology &
Adult Congenital
Heart Disease*



Shaun
Mohan, MD, FHRS
*Pediatric Cardiology &
Pediatric
Electrophysiology*



Meagan
Peek, MD
*Pediatric Cardiology &
Fetal Cardiac Care*



Derek
Weyhrauch, MD
*Pediatric Cardiology &
Preventive Cardiology*

Pediatrics



MADISONVILLE

**Owensboro Health Medical Group
Children's Center
Madisonville Healthplex**
510 Ruby Dr.
Madisonville, KY 42431

**Phone: 270-399-7900
Fax: 270-399-7910**



Amy J.
Haynie, APRN

OWENSBORO

**Owensboro Health Medical Group
Children's Center
Breckenridge Medical Building**
1000 Breckenridge St.
Suite 300
Owensboro, KY 42303

**Phone: 270-688-4480
Fax: 270-688-4489**



Rebekah
Booth, MD



Nicole
Davis, DO



Amit
Dulabh, MD



John
Phillips II, MD



Sarah
Osborne, APRN



Micah
Price, APRN

Pediatrics

LEITCHFIELD

Leitchfield Pediatric Clinic PSC
901 Wallace Ave.
Leitchfield, KY 42754

**Phone: 270-259-5641
Fax: 270-259-5309**



John
Evans, MD



Anthony
Smith, DO



Elizabeth
Stivers, MD

Pediatrics

OWENSBORO

Owensboro Pediatrics
2200 E. Parrish Ave.
Suite 101
Owensboro, KY 42303

Phone: 270-683-3232
Fax: 270-852-1600



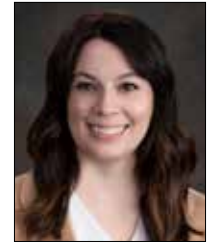
Andrea
Johnston, MD



Lynette
Martin, MD



Jeremiah
Mason, DO



Sara
Medsker, DO



Amy
Ray, MD



Michael
Yeiser, MD

Pediatric Hospitalists



OWENSBORO

Owensboro Health Medical Group
Pediatric Hospitalists
Owensboro Health
Regional Hospital
1201 Pleasant Valley Rd.
7th Floor
Owensboro, KY 42303

Phone: 270-417-4705
Fax: 270-417-4709



Heather
Johnson, MD



Rayana
Johnson, MD

Physical Medicine & Rehabilitation



OWENSBORO

**Owensboro Health Medical Group
Physical & Rehabilitation
Owensboro Health
Regional Hospital**
1201 Pleasant Valley Rd.
Rehabilitation Unit
Owensboro, KY 42303



Trasey
Falcone, DO



Joseph
Porter, MD



Kerri
Booker, APRN

Phone: 270-417-7925

Fax: 270-417-0123

OWENSBORO

**Owensboro Health Medical Group
Physical & Rehabilitation
Pleasant Valley Medical Building**
1301 Pleasant Valley Rd.
Suite 500C
Owensboro, KY 42303



Trasey
Falcone, DO



Joseph
Porter, MD

Phone: 270-417-7925

Fax: 270-417-0123

Physical Medicine & Rehabilitation

OWENSBORO

**Riverbend Physical Medicine
and Rehabilitation, PLLC**
1102 Triplett St.
Suite 2100
Owensboro, KY 42303



Tristan
Briones II, MD

Phone: 270-926-7320

Fax: 270-926-7302

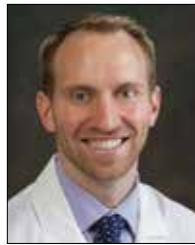
Plastic & Reconstructive Surgery



OWENSBORO

**Owensboro Health Medical Group
Plastic & Reconstructive Surgery
Ford Medical Building
2211 Mayfair Ave.
Suite 305
Owensboro, KY 42301**

**Phone: 270-688-3700
Fax: 270-688-3709**



Benjamin
Kittinger, MD



Janae
Kittinger, MD



James
Tidwell, MD



Tabitha
Hall, PA-C



Jenny
Neely, APRN

Plastic Surgery

MADISONVILLE

**Plastic Surgery Center
1900 N. Main St.
Madisonville, KY 42431**

**Phone: 270-245-2105
Fax: 270-452-2355**

Not Pictured:
Henry Smith, MD

Podiatry



GREENVILLE

**Owensboro Health Medical Group
Podiatry
Muhlenberg Medical Building
420 Hopkinsville St.
Greenville, KY 42345**

**Phone: 270-377-2440
Fax: 270-377-2430**



Shailer
Martin, DPM



HENDERSON

Owensboro Health Medical Group
Podiatry
Henderson Healthplex
1200 Barret Blvd.
Henderson, KY 42420

Phone: 270-844-8725
Fax: 270-844-8794



Jared
Minson, DPM

LEITCHFIELD

Owensboro Health Medical Group
Podiatry
Owensboro Health
Twin Lakes Medical Center
910 Wallace Ave.
Suite 301
Leitchfield, KY 42754

Phone: 270-200-4545
Fax: 270-200-4543



Nathaniel
Gastaldo, DPM

MADISONVILLE

Owensboro Health Medical Group
Podiatry
Madisonville Healthplex
510 Ruby Dr.
Madisonville, KY 42431

Phone: 270-844-8725
Fax: 270-844-8794



Jared
Minson, DPM

OWENSBORO

Owensboro Health Medical Group
Podiatry
Pleasant Valley Medical Building
1301 Pleasant Valley Rd.
Suite 500
Owensboro, KY 42303

Phone: 270-417-7400
Fax: 270-417-7401



Jared
Minson, DPM

Podiatry

LEITCHFIELD

Louisville Foot & Ankle Specialists

301 South Main
Leitchfield, KY 42754

Phone: 502-893-1844
Fax: 502-634-3758

Not Pictured:
Thomas Childress, DPM
Austin Hall, DPM

OWENSBORO

Advanced Center for Orthopedics & Sports Medicine

2831 New Hartford Rd.
Owensboro, KY 42301

Phone: 270-926-4100
Fax: 270-684-4678



Glenn
Henning, DPM

Prosthetics

OWENSBORO

Shaw's Prosthetics Plus

1019 Old Hartford Rd.
Owensboro, KY 42303

Phone: 270-684-7672
Fax: 270-684-7094



Terry Shaw, LPO,
CPO, FAAOP

OWENSBORO

Tom Watson's Prosthetics & Orthotics Lab

2819 W. 4th St.
Owensboro, KY 42301

Phone: 270-684-6128
Fax: 270-684-6411



Jeffrey
Phelps, CPO

Pulmonology



GREENVILLE

Owensboro Health Muhlenberg
Community Hospital
Coal Miners' Respiratory Clinic
Owensboro Health Muhlenberg
Community Hospital
440 Hopkinsville St.
Greenville, KY 42345



Michael
Muzoora, MD



Monica
Noe, APRN

Not Pictured:
Manoj Majmudar, MD

Phone: 270-338-8000

Fax: 270-338-8278

LEITCHFIELD

Owensboro Health Medical Group
Pulmonology
Owensboro Health
Twin Lakes Medical Center
912 Wallace Ave.
Suite 105
Leitchfield, KY 42754



Frank
Taylor, MD

Phone: 270-200-4536

Fax: 270-200-4537

Pulmonology/Critical Care



MADISONVILLE

Owensboro Health Medical Group
Pulmonology
Madisonville Healthplex
510 Ruby Dr.
Madisonville, KY 42431



Michael
Muzoora, MD

Phone: 270-417-7515

Fax: 270-417-7699

Pulmonology/Critical Care



OWENSBORO

Owensboro Health Medical Group
Pulmonology
Pleasant Valley Medical Building
1301 Pleasant Valley Rd.
Suite 404
Owensboro, KY 42303

Phone: 270-417-7515
Fax: 270-417-7699



Brad
Brasher, MD



Meliha
Hrustanovic-Kadic, MD



Michael
Muzoora, MD



Sarah
Neill, MD



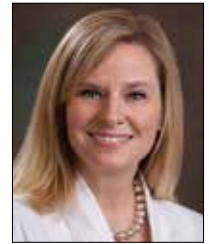
Berhanemeskel
Nesketa, MD



Thomas
Waring, MD



Emily
Freeman, APRN



Crystal
Heady, APRN



Lindie
Unsel, APRN

Critical Care



Sarah
Arnold, APRN



Mike
Atkinson, PA-C



Haley
Fuller, APRN



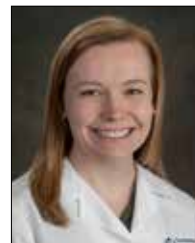
Shawney
Kittinger, APRN



Jackie
Lohmann, PA-C



Maddie
Phillips, PA-C



Ellie
Smith, PA-C

Radiation Oncology



OWENSBORO

Owensboro Health
Radiation Oncology
Owensboro Health
Mitchell Memorial Cancer Center
1020 Breckenridge St.
Owensboro, KY 42303

Phone: 270-688-3600
Fax: 270-688-3673



Ryan
Abel, MD

Radiology



OWENSBORO

Owensboro Health
Outpatient Imaging

The Springs Health Centre
2200 E. Parrish Ave.
Bldg. D, Suite 200
Owensboro, KY 42303

Breckenridge
Medical Building
1000 Breckenridge St.
Suite 101
Owensboro, KY 42303

Owensboro Health
Healthpark
1006 Ford Ave.
Owensboro, KY 42301

For all locations:

Phone: 270-685-7100
Fax: 270-926-4574



Kent
Filbeck, MD



John
Mulligan, MD



Matthew
Nitz, MD



Patrick
Padgett, MD



Scott
Patterson, MD



Carl
Watkins, MD

Radiology

GREENVILLE

Radiology Partners KY

440 Hopkinsville St.
Greenville, KY 42345

Phone: 270-338-8000

Fax: 270-417-0175



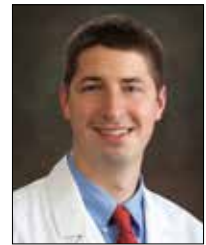
Bruce
Burton, MD



Okan
Suzer, MD



Roger
Hagerman, PA-C



Benjamin
Rhodes, PA-C

Not Pictured:
Steven Bush, MD
Eric Edds, MD

William Tagg, MD
Will Wilson, MD

Tamara Rhodes, APRN

LEITCHFIELD

Envision

910 Wallace Ave.
Leitchfield, KY 42754

Phone: 216-285-3603

Fax: 216-285-3605

Not Pictured:
Richard Eickler, MD

OWENSBORO

Radiology Partners

1301 Pleasant Valley Rd.
Suite 202
Owensboro, KY 42303

Phone: 270-417-6100

Fax: 270-417-0175



Bruce
Burton, MD



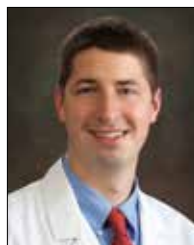
Okan
Suzer, MD

Not Pictured:
Andrew Crush, MD
Eric Edds, MD
William Tagg, MD
Will Wilson, MD
Tamara Rhodes, APRN

Interventional Radiology



Roger
Hagerman, PA-C



Benjamin
Rhodes, PA-C

Not Pictured:
Robert Cirillo, MD
William Lea, MD

Sleep Medicine



GREENVILLE

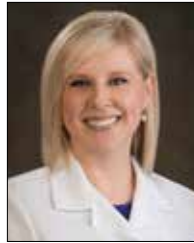
**Owensboro Health Muhlenberg
Community Hospital Coal
Miners' Respiratory Clinic
Owensboro Health Muhlenberg
Community Hospital**
440 Hopkinsville St.
Greenville, KY 42345

Phone: 270-338-8000

Fax: 270-338-8278



Abinash
Joshi, MD
Telemedicine



Emily
Freeman, APRN
Telemedicine



Crystal
Heady, APRN
Telemedicine



Monica
Noe, APRN



Lindie
Unsel, APRN
Telemedicine

LEITCHFIELD

**Owensboro Health Medical Group
Pulmonology
Owensboro Health
Twin Lakes Medical Center**
912 Wallace Ave.
Suite 105
Leitchfield, KY 42754

Phone: 270-200-4536

Fax: 270-200-4537



Abinash
Joshi, MD



Emily
Freeman, APRN

MADISONVILLE

**Owensboro Health Medical Group
Pulmonology
Madisonville Healthplex**
510 Ruby Dr.
Madisonville, KY 42431

Phone: 270-417-7515

Fax: 270-417-7699



Abinash
Joshi, MD
Telemedicine



Emily
Freeman, APRN
Telemedicine



Crystal
Heady, APRN
Telemedicine



Lindie
Unsel, APRN
Telemedicine

Sleep Medicine



OWENSBORO

**Owensboro Health Medical Group
Pulmonology**
Pleasant Valley Medical Building
1301 Pleasant Valley Rd.
Suite 404
Owensboro, KY 42303

Phone: 270-417-7515
Fax: 270-417-7699



Abinash
Joshi, MD



Sarah
Neill, MD



Emily
Freeman, APRN



Crystal
Heady, APRN



Lindie
Unsel, APRN

POWDERLY

**Owensboro Health Medical Group
Pulmonology**
Muhlenberg Healthplex
2025 W. Everly Brothers Blvd.
Powderly, KY 42367

Phone: 270-417-7515
Fax: 270-417-7699



Abinash
Joshi, MD
Telemedicine



Emily
Freeman, APRN
Telemedicine



Crystal
Heady, APRN
Telemedicine



Lindie
Unsel, APRN
Telemedicine

Sports Medicine



BEAVER DAM

**Owensboro Health Medical Group
Orthopedics & Sports Medicine**
1213 N. Main St.
Beaver Dam, KY 42320

Phone: 270-417-7940
Fax: 270-417-7949



Isaac
Miller, MD



HENDERSON

Owensboro Health Medical Group
Orthopedics & Sports Medicine
Henderson Healthplex
1200 Barret Blvd.
Henderson, KY 42420

Phone: 270-417-7940
Fax: 270-417-7949

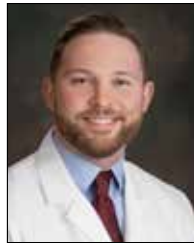


Reid
Wilson, MD

LEITCHFIELD

Owensboro Health Medical Group
Orthopedics & Sports Medicine
Owensboro Health Twin Lakes
Medical Center
908 Wallace Ave.
Suite 109
Leitchfield, KY 42754

Phone: 270-230-0124
Fax: 270-230-0157



Isaac
Miller, MD

OWENSBORO

Owensboro Health Medical Group
Orthopedics & Sports Medicine
Pleasant Valley Medical Building
1301 Pleasant Valley Rd.
Suite 500
Owensboro, KY 42303

Phone: 270-417-7940
Fax: 270-417-7949



Alexander
Brown, MD



Justis
Stolz, MD

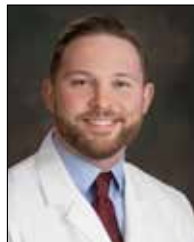


Reid
Wilson, MD

POWDERLY

Owensboro Health Medical Group
Orthopedics & Sports Medicine
Muhlenberg Healthplex
2025 W. Everly Brothers Blvd.
Powderly, KY 42367

Phone: 270-377-2590
Fax: 270-377-2778



Isaac
Miller, MD

Surgery

GREENVILLE

Owensboro Health Medical Group
Surgical Specialists
Muhlenberg Medical Building
420 Hopkinsville St.
Greenville, KY 42345

Phone: 270-377-2440
Fax: 270-377-2441



Johongir
Muradov, MD

HENDERSON

Owensboro Health Medical Group
Surgical Specialists
Henderson Healthplex
1200 Barret Blvd.
Henderson, KY 42420

Phone: 270-844-8600
Fax: 270-844-8610



Christopher
Nebel, DO

LEITCHFIELD

Owensboro Health Medical Group
Surgical Specialists
Owensboro Health Twin Lakes
Medical Center
910 Wallace Ave.
Suite 206
Leitchfield, KY 42754

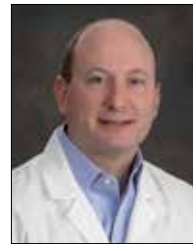
Phone: 270-259-3035
Fax: 270-259-3332



Clinton
Kaufman, DO



Marcus
Moseley, DO



Thomas
Schory, MD

MADISONVILLE

Owensboro Health Medical Group
Surgical Specialists
Multicare
444 S. Main St.
Madisonville, KY 42431

Phone: 270-821-4444
Fax: 270-821-3412



Johongir
Muradov, MD

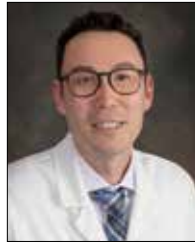
Surgery



OWENSBORO

**Owensboro Health Medical Group
Surgical Specialists
Ridgecrest Medical Park
2801 New Hartford Rd.
Owensboro, KY 42303**

**Phone: 270-683-3720
Fax: 270-686-7331**



Samuel
Carson, MD



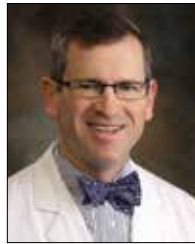
R. Brad
Cornell, MD



P. Anthony
Decker, MD



John
Falcone, MD



Christopher
Glaser, MD



Erik
Lanham, DO



Marcus
Moseley, DO



Alan
Mullins, MD



Christopher
Nebel, DO



Jessica
Raque, MD



Abbie
Daniel, APRN



Robert
Payne, APRN



Meredith
Pinto, PA-C



Breanna
Smith, APRN

Surgery



OWENSBORO

**Owensboro Health
Weight Management**
2235 Mayfair Ave.
Owensboro, KY 42301

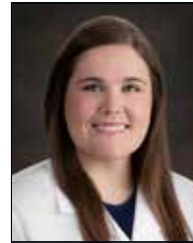
Phone: 270-688-1500
Fax: 270-688-1501



Ravi
Alapati, MD



Kristofer
Nava, MD



Caitlin
Heep, PA-C

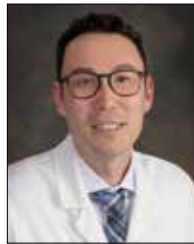


Ericka
Mason, PA-C

TELL CITY

**Owensboro Health Medical Group
Surgical Specialists**
Riverfront Medical Building
421 7th St.
Tell City, IN 47586

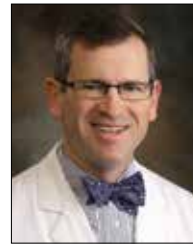
Phone: 812-547-7448
Fax: 812-547-7331



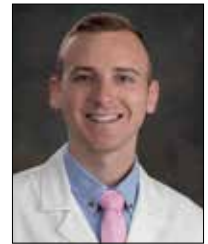
Samuel
Carson, MD



John
Falcone, MD



Christopher
Glaser, MD



Erik
Lanham, DO



Alan
Mullins, MD

Surgery

OWENSBORO

George S. Gilliam, MD
3333 Frederica St.
Suite 5
Owensboro, KY 42301

Phone: 270-691-9697
Fax: 270-691-0485

Not Pictured:
George Gilliam, MD

Urgent Care



HENDERSON

**Owensboro Health Medical Group
Urgent Care
Henderson Healthplex
1200 Barret Blvd.
Henderson, KY 42420**

**Phone: 270-844-8600
Fax: 270-844-8610**



Ashley Brunner-
Bailey, APRN



Nicole
French, APRN



Tina
Holbrook, APRN



Nichole
Mannahan, APRN



Haley
Rascoe, APRN

LEITCHFIELD

**Owensboro Health Medical Group
Urgent Care
1895 W. Elizabethtown Rd.
Leitchfield, KY 42754**

**Phone: 270-230-0182
Fax: 270-230-1420**



Ivan
Escudero, MD



Greg
Koo, MD



Ashley
Flener, APRN



Cindy
Overby, APRN



Cynthia
Veyel, APRN

Urgent Care



MADISONVILLE

**Owensboro Health Medical Group
Urgent Care
Madisonville Healthplex**
510 Ruby Dr.
Madisonville, KY 42431

**Phone: 270-399-7900
Fax: 270-399-7910**



Robert Holz knecht, MD



Laura Bearden, APRN



Megan Bursleson, APRN



Jason Canterberry, PA-C



Tammy Clayton, PA-C



Amy Hendon, APRN



Kaci Henry, APRN



Amber Keown, APRN



Ellen Parrish, APRN



Nikki Rothwell, PA-C



Tammy Stroud, APRN

OWENSBORO

**Owensboro Health Medical Group
Urgent Care
Ford Medical Building**
2211 Mayfair Ave.
Suite 101
Owensboro, KY 42301

**Phone: 270-688-1352
Fax: 270-683-4313**



Wade Taylor, DO



Megan Bursleson, APRN



Richard Higgs, APRN



Brooke Kassinger, PA-C



Megan McCormick, APRN



Leslie Phelps, APRN



Ada Rhodes, PA-C



Carla Terrell, APRN

Urgent Care



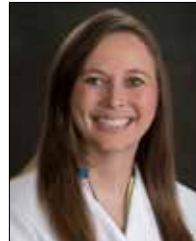
POWDERLY

**Owensboro Health Medical Group
Urgent Care
Muhlenberg Healthplex**
2025 W. Everly Brothers Blvd.
Powderly, KY 42367

**Phone: 270-377-2600
Fax: 270-377-2779**



Gabrielle
Harris, APRN



April
Hollis, APRN



Ashley
Houchin, APRN



Lacey
Johnson, APRN



Rachel
McDonald, APRN



Jamie
Nance, APRN



Tracey
Sloan, APRN



Kylee
Stroud, APRN

Urology



GREENVILLE

**Owensboro Health Medical Group
Urology
Muhlenberg Medical Building**
420 Hopkinsville St.
Greenville, KY 42345

**Phone: 270-417-7880
Fax: 270-417-7888**



Megan
Fulkerson, APRN

MADISONVILLE

**Owensboro Health Medical Group
Urology
Multicare**
444 S. Main St.
Madisonville, KY 42431

**Phone: 270-417-7880
Fax: 270-417-7888**



Maghan
Fares, APRN

Urology



OWENSBORO

Owensboro Health Medical Group
Urology
Pleasant Valley Medical Building
1301 Pleasant Valley Rd.
Suite 302
Owensboro, KY 42303

Phone: 270-417-7880
Fax: 270-417-7888



Dan
Andersen, MD



Corey
Johnson, MD



Chris
Riney, MD



Daniel
Warburton, MD



Maghan
Fares, APRN



Megan
Fulkerson, APRN



Amanda
Hoffman, APRN

Weight Management



OWENSBORO

Owensboro Health
Weight Management
2235 Mayfair Ave.
Owensboro, KY 42301

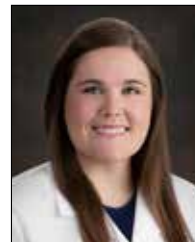
Phone: 270-688-1500
Fax: 270-688-1501



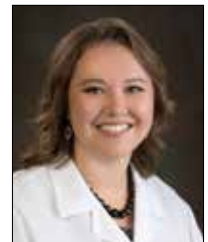
Ravi
Alapati, MD



Kristofer
Nava, MD



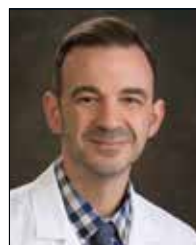
Caitlin
Heep, PA-C



Ericka
Mason, PA-C



Mike
Farina, PhD
Psychologist



Scott
Hall, RD
Dietitian



BEAVER DAM

Owensboro Health Wound Center
Ohio County Wound Center
1307 N. Main St.
Beaver Dam, KY 42320

Phone: 270-688-2210
Fax: 270-687-4322



Heather
Green, MD

LEITCHFIELD

**Owensboro Health Twin Lakes
Wound Healing Center**
**Owensboro Health
Twin Lakes Medical Center**
910 Wallace Ave.
Leitchfield, KY 42754

Phone: 270-259-1612
Fax: 270-259-1674



Gay
Fulkerson, MD



Jennifer
Hughes, APRN

OWENSBORO

Owensboro Health Wound Center
Triplett Medical Building
1325 Triplett St.
Suite B
Owensboro, KY 42303

Phone: 270-688-4325
Fax: 270-687-4322



Jeffrey
Danetz, MD



Ashley
Emmick, APRN



Courtney
Hardy, APRN

Alphabetical Provider Listing

Abel, Ryan, MD	Radiation Oncology	270-688-3600.....	69
Abshier, Beth, CRNA	Anesthesia	270-417-5561.....	15
Alapati, Ravi, MD	Bariatrics/Weight Management	270-688-1500.....	16, 76, 80
Alexander, Craig, MD	Pediatric Cardiology	502-584-3200, Option 9	60
Allen, Nicole, APRN	Neurology	270-417-7830.....	47
Allen, Tara, APRN	Anesthesia	270-417-6950.....	14
Alvey, Darla, APRN	Obstetrics & Gynecology.....	270-926-3700.....	49
Amelyanchyk, Victoria, MD	Family Medicine	270-688-2077.....	34
Amon, Jin, MD	Behavioral Services.....	270-417-7980.....	17
Amundson, Craig, MD	Internal Medicine.....	270-821-4444.....	41
Andersen, Dan, MD	Urology	270-417-7880.....	80
Andreason, Chase, DMD.....	Oral & Maxillofacial Surgery	270-208-9005.....	53
Arbuckle, Kristen, CRNA.....	Anesthesia	270-338-8000.....	15
Arif, Hamza, MD	Nephrology	270-689-1919.....	45
Arnold, Sarah, APRN	Critical Care	270-417-7515.....	68
Atcher, Landon, CRNA	Anesthesia	270-338-8000.....	15
Atherton, Carla, CRNA.....	Anesthesia	270-417-5561.....	15
Atkinson, Mike, PA-C	Critical Care.....	270-417-7515.....	68
Aud, Todd, CRNA	Anesthesia	270-417-5561.....	15
Babbs, Millie, MD	Family Medicine	270-688-2077.....	33
Baker, Eric, MD	Emergency Medicine	270-417-5911.....	26
Barnard, Adam, PA-C.....	Orthopedics & Sports Medicine	270-417-7940.....	54, 55
Barnett, Dustie, APRN	Nephrology	270-689-1919.....	45
Bazzell, Laessa, CRNA.....	Anesthesia	270-417-5561.....	15
Bean, Kati, APRN	Gastroenterology & Hepatology.....	270-417-7800.....	36
Bearden, Laura, APRN	Urgent Care	270-399-7900.....	78
Begay, Ray, MD	Family Medicine	270-259-0352.....	35
Benn, Kiesha, MD	Maternal-Fetal Medicine	270-417-7720.....	44
Best, Daniel, APRN	Occupational Medicine.....	270-688-1351.....	51, 52
Bhatti, Khalid, MD	Nephrology	270-765-5112.....	45
Bickett, Justen, APRN	Family Medicine	270-686-8500.....	31
Bisel, Jamie, PA-C	Internal Medicine.....	270-240-2305.....	43
Blandford, Jonathan, DO.....	Internal Medicine.....	270-685-1066.....	42
Blankendaal, Alicia, CRNA	Anesthesia	270-417-5561.....	15
Block, Jami, APRN	Neonatal-Perinatal	270-417-5314.....	44
Blue, Brandy, DPN, APRN	Family Medicine	270-926-2273.....	35
Boles, David, MD	Orthopedics & Sports Medicine	270-926-4100.....	56
Booker, Kerri, APRN	Physical Medicine & Rehabilitation	270-417-7925.....	63
Booth, Rebekah, MD	Pediatrics	270-688-4480.....	61
Bowlds, Katie, APRN	Orthopedics & Sports Medicine	270-417-7940.....	54, 55
Bradley, Jeremy, MD	Family Medicine	270-684-7711.....	35
Bradley, Scott, APRN	Hospitalists.....	270-417-4700.....	40
Brasher, Brad, MD	Pulmonology/Critical Care.....	270-417-7515.....	68
Brenner, Jennifer, APRN	Neurological Surgery.....	270-688-1770.....	46
Bretschneider, Lori, APRN	Orthopedics & Sports Medicine	270-926-4100.....	57
Briones II, Tristian, MD	Physical Medicine & Rehabilitation	270-926-7320.....	63
Brown, Alexander, MD	Orthopedics & Sports Medicine	270-417-7940.....	55, 73
Brown, Heather, MD	Neonatal-Perinatal	270-417-5314.....	44
Brown, Jeffrey, PA-C.....	Neurological Surgery.....	270-688-1770.....	46
Brown, Teresa, MD	Obstetrics & Gynecology Hospitalists.....	270-417-5340.....	51
Bruneau, Denise, MD	Obstetrics & Gynecology Hospitalists.....	270-417-5340.....	51
Brunner-Bailey, Ashley APRN	Urgent Care	270-844-8600.....	77
Buchanan, Bernard, MD	Endocrinology.....	270-926-2273.....	28
Buck, James, MD	Obstetrics & Gynecology.....	270-259-2700.....	48
Buck, Kristin, APRN	Addiction Services.....	270-230-0212.....	14
Buckby-Reddish, Lori, LCSW	Behavioral Services.....	270-688-1547.....	18
Buckles, Avery, DO.....	Family Medicine	270-688-2077.....	33
Bullock, Todd, APRN.....	Family Medicine	270-879-3711.....	29
Bunch, Morgan, APRN	Cardiology.....	270-417-7500.....	19
Burch, Megan, APRN	Obstetrics & Gynecology.....	270-926-3700.....	49
Burgan, Richard, PA-C.....	Cardiology.....	270-417-7500.....	20

Alphabetical Provider Listing

Burkhart, Bethany, MD	Emergency Medicine	270-417-5911	27
Burleson, Megan, APRN	Urgent Care	270-688-1352	78
Burshears, Bridget, MD	Neonatal-Perinatal	270-417-5314	44
Burton, Bruce, MD	Radiology	270-417-6100	70
Bush, Steven, MD	Radiology	270-338-8000	70
Camacho, Kenneth, MD	Gastroenterology & Hepatology	270-417-7800	36
Canant, Kenneth, MD	Emergency Medicine	270-417-5911	26
Cannon, Harold, MD	Neurological Surgery	270-688-1770	46
Canterberry, Jason, PA-C	Urgent Care	270-399-7900	78
Carlson, Eric, DO	Family Medicine	270-688-2077	33
Carrico, Matheis, MD	Internal Medicine	270-685-1066	42
Carson, Samuel, MD	Surgery	270-683-3720	75, 76
Carter, W. Randy, MD	Cardiothoracic Surgery	270-417-7510	21
Cary, Jamie, CRNA	Anesthesia	270-417-5561	15
Cash, J. Christian, MD	Cardiothoracic Surgery	270-417-7510	21
Cavataio, Nino, MD	Hospitalists	270-417-4700	40
Cecil, Beth, RDN, LD	Education & Wellness	270-688-4804	25
Cecil, Morgan, APRN	Gastroenterology & Hepatology	270-417-7800	36
Cecil-Riddle, Kimberly, APRN	Emergency Medicine	270-338-8332	26
Chaltry, Justin, DO	Emergency Medicine	270-259-9400	27
Chamberlain, Samantha, APRN	Family Medicine	270-684-1145	31
Charles, David, DO	Cardiology	270-417-7500	19, 20
Chaudry, Ahmad, MD	Cardiothoracic Surgery	270-417-7510	21
Chauhan, Priyank, MD	Hospitalists	270-259-9555	39
Chess, Rhonda, APRN	Neonatal-Perinatal	270-417-5314	44
Childress, Thomas, DPM	Podiatry	502-893-1844	66
Christensen, Brian, DO	Family Medicine	270-688-2077	33
Cirillo, Robert, MD	Interventional Radiology	270-417-6100	70
Clark, Tara, APRN	Neurological Surgery	270-688-1770	46
Clayton, Tammy, PA-C	Urgent Care	270-399-7900	78
Clemons, Blake, APRN	Family Medicine	270-259-8888	30
Clore, Lee, MD	Allergy & Immunology	270-684-6144	14
Cole, Darby, MD	Family Medicine	270-688-2077	32
Collins, Andrew, DO	Geriatrics	270-688-4401	37
Condon, Heather, MD	Family Medicine	270-684-1145	31
Connor, Gregory, DO	Emergency Medicine	270-417-5911	26
Coomes, James, MD	Emergency Medicine	270-338-8332	26
Cooper, Christopher, PA-C	Emergency Medicine	270-417-5911	27
Cornell, R. Brad, MD	Surgery	270-683-3720	75
Cottrell, Bradford, MD	Emergency Medicine	270-259-9400	27
Covington, Kimberly, CRNA	Anesthesia	270-338-8000	15
Coyne, Ryan, PA-C	Orthopedics & Sports Medicine	270-417-7940	54, 55
Creech, Cortney, CRNA	Anesthesia	270-417-5561	15
Crocker, Jared, CRNA	Anesthesia	270-259-9400	15
Crowe, Daniel, APRN	Behavioral Services	270-417-7980	17, 18
Crowley, Sydney, MD	Obstetrics & Gynecology	270-478-5334	50
Crowley, Daniel "Wade", CRNA	Anesthesia	270-417-5561	15
Crush, Andrew, MD	Radiology	270-417-6100	70
Cunningham, Anjali, APRN	Cardiology	270-240-2129	21
Danetz, Jeffrey, MD	Wound Care	270-688-4325	81
Daniel, Abbie, APRN	Surgery	270-683-3720	75
Daniel, Susan, DNP, APRN	Family Medicine	270-684-1145	31
Davis, Brett, MD	Gastroenterology & Hepatology	270-228-0210	37
Davis, Darci, RDN, LD	Education & Wellness	270-688-4804	23, 25
Davis, Nicole, DO	Pediatrics	270-688-4480	61
Dawson, Angela, MD	Obstetrics & Gynecology	270-926-3700	49
Day, Lee Ann, CRNA	Anesthesia	270-417-5561	15
De Croos, Mary, MD	Endocrinology	270-688-3500	28
Decker, P. Anthony, MD	Surgery	270-683-3720	75
Decker, Rebecca, APRN	Cardiology	270-683-8672	21
Dickens, Brett, MD	Emergency Medicine	270-417-5911	26

Alphabetical Provider Listing

Dorbad, David, MD	Behavioral Services	270-230-0212	17
Dowdy, Elyse, CSW	Behavioral Services	270-417-7980	16, 17
DuFrayne, Francis, MD	Gastroenterology & Hepatology	270-417-7800	36
Dukes, Keely, APRN	Behavioral Services	270-399-7900	17
Dulabh, Amit, MD	Pediatrics	270-688-4480	61
Dulabh, Candace, PA-C	Family Medicine	270-688-4401	30
Dunham, George, MD	Hospitalists	270-417-4700	40
Durham, Collin, MD	Hospitalists	270-417-4700	40
Duvall, Melissa, LPCC	Behavioral Health	270-688-2077	32
Eblen, Alison, APRN	Neonatal-Perinatal	270-417-5314	44
Edds, Eric, MD	Radiology	270-417-6100	70
Edds, Gerald, MD	Cosmetic Surgery	270-926-9033	22
Edge, Mary, CRNA	Anesthesia	270-417-5561	15
Edwards, Emily, CRNA	Anesthesia	270-417-5561	15
Eggers, David, MD	Neurological Surgery	270-688-1770	46
Eickler, Richard, MD	Radiology	216-285-3603	70
Ekong, John, MD	Hospitalists	270-417-4700	40
Elfrink, Eden, DO	Lifestyle Medicine	270-821-4444	30, 43
Elkinson, Elizabeth, MD	Obstetrics & Gynecology Hospitalists	270-417-5340	51
Ellsworth, Jodie, LPCC	Behavioral Services	270-399-7900	17
Emmick, Ashley, APRN	Wound Care	270-688-4325	81
Escudero, Ivan, MD	Family Medicine	270-259-8888	30
Evans, John, MD	Pediatrics	270-259-5641	61
Falcone, John, MD	Surgery	270-683-3720	75, 76
Falcone, Trasey, DO	Physical Medicine & Rehabilitation	270-417-7925	63
Fares, Maghan, APRN	Urology	270-417-7880	79, 80
Farina, Mike, PhD	Bariatrics/Weight Management	270-688-1500	16, 80
Farmer, John, MD	Family Medicine	270-821-4444	30
Farner, Scott, MD	Orthopedics & Sports Medicine	270-417-7940	55, 56
Faull, Seth, DO	Emergency Medicine	270-417-5911	26
Fazenbaker, Stacey, MD	Family Medicine	270-688-4401	30
Fennell, Elton, MD	Obstetrics & Gynecology Hospitalists	270-417-5340	51
Ferrell, LK, DO	Hospitalists	270-417-4700	40
Filbeck, Kent, MD	Radiology	270-685-7100	69
Finley, Matthew, PA-C	Endocrinology	270-926-2273	28
Fiorella, Magan, APRN	Family Medicine	270-684-1145	31
Fisher, Megan, APRN	Hematology & Oncology	270-688-3445	37, 38
Fizer, Ted, APRN	Emergency Medicine	270-259-9400	27
Flamion, Christa, CSW	Behavioral Services	270-688-1547	18
Flener, Ashley, APRN	Internal Medicine	270-259-9316	41, 77
Fletcher, Gregory, MD	Emergency Medicine	270-417-5911	26
Florendo, Randy, MD	Emergency Medicine	270-259-9400	27
Flowers, Thomas, DO	Emergency Medicine	270-338-8332	26
Floyd, Emily, APRN	Cardiology	270-417-7500	20
Franks, Chace, APRN	Cardiology	270-683-8672	21
Freeman, Emily, APRN	Pulmonology/Critical Care	270-417-7515	68, 71, 72
French, Nicole, APRN	Urgent Care	270-844-8600	51, 77
Fulkerson, Gay, MD	Family Medicine	270-259-4666	35, 81
Fulkerson, Megan, APRN	Urology	270-417-7880	79, 80
Fuller, Haley, APRN	Critical Care	270-417-7515	68
Futrell, Leigh Ann, APRN	Cardiology	270-683-8672	21
Gabbard, Ashley, DO	Internal Medicine	270-377-2626	42
Gabbard, Michael, DO	Family Medicine	270-377-2626	34
Gaither, John, CRNA	Anesthesia	270-259-9400	15
Gaither, Melissa, RDN, LD, CDCES, MLDE	Education & Wellness	270-688-4804	22, 23, 24
Garner, Paul, MD	Anesthesia	270-417-5561	15
Garrett, Heather, MD	Hospitalists	270-338-8000	39
Garrett, Michael, APRN	Hospitalists	270-338-8000	39
Garrity, John, CRNA	Anesthesia	270-417-5561	15
Gastaldo, Nathaniel, DPM	Podiatry	270-200-4545	65
Germany, Caroline, MD	Neurology	270-417-7830	47

Alphabetical Provider Listing

Gilliam, George, MD	Surgery	270-691-9697	76
Gipe, Patrick, MD	Internal Medicine	270-685-1066	42
Gizzi, Vincent, PA-C	Orthopedics & Sports Medicine	270-417-7940	54, 55
Glaser, Christopher, MD	Surgery	270-683-3720	75, 76
Gleason, Shannon, DPN, APRN	Family Medicine	270-926-2273	35
Goebel, Eric, MD	Neurological Surgery	270-688-1770	46
Goetz, Lillie, PA-C	Cardiology	270-417-7500	20
Good, Richard, MD	Obstetrics & Gynecology	270-926-4449	50
Gray, Jeff, PhD	Neuropsychology	812-477-0407	47
Green, Heather, MD	Wound Care	270-688-2210	81
Griffin, Eric, MD	Gynecology	270-926-3700	48, 49
Grothouse, Kelsey, APRN	Geriatrics	270-688-4401	37
Guillen, Kathryn, CRNA	Anesthesia	270-417-5561	15
Guizio-Crockett, Mackenzie, CRNA	Anesthesia	270-338-8000	15
Gupta, Mukesh, MD	Cardiology	270-417-7500	20
Haga, Laura, APRN	Orthopedics & Sports Medicine	270-926-4100	57
Hagerman, Michael, CRNA	Anesthesia	270-417-5561	15
Hagerman, Roger, PA-C	Interventional Radiology	270-417-6100	70
Hall, Austin, DPM	Podiatry	502-893-1844	66
Hall, Jon, MD	Family Medicine	270-844-8600	29
Hall, Scott, RD	Bariatrics/Weight Management	270-688-1500	16, 80
Hall, Tabitha, PA-C	Plastic & Reconstructive Surgery	270-688-3700	22, 64
Hammen, John, DMD	Oral & Maxillofacial Surgery	270-926-6100	53
Hamner, Troy, MD	Family Medicine	270-688-2077	34
Hanin, Jacob, MD	Hospitalists	270-417-4700	40
Hardesty, Jenny, APRN	Obstetrics & Gynecology	270-259-2700	48
Hardesty, Madison, MD	Hospitalists	270-417-4700	40
Hardy, Courtney, APRN	Wound Care	270-688-4325	81
Haria, Dhiren, MD	Nephrology	270-689-1919	45
Harkins, Meredith, APRN	Long-Term Care	270-338-8434	44
Harley, Kim, APRN	Occupational Medicine	270-688-1351	34, 52, 53
Harris, Gabrielle, APRN	Urgent Care	270-377-2600	52, 79
Harris, Peggy, APRN	Family Medicine	270-821-4444	30
Harrison, Andrea, APRN	Gastroenterology & Hepatology	270-417-7800	36
Harrison, Joseph, MD	Behavioral Services	270-417-7980	17
Hass, Calla, APRN	Family Medicine	270-686-8500	31
Hawkins, Kaitlin W., DPN, APRN	Obstetrics & Gynecology	270-926-3700	49
Hay, Casey, MD	Otolaryngology	270-259-2714	57
Hayden, Brent, MD	Hospitalists	270-417-4700	40
Hayden, Nolan, CRNA	Anesthesia	270-417-5561	15
Hayden, Stephanie, MD	Pediatrics	270-688-2077	32
Haynie, Amy J.	Pediatrics	270-399-7900	61
Heady, Crystal, APRN	Pulmonology/Critical Care	270-417-7515	68, 71, 72
Heep, Caitlin, PA-C	Bariatrics/Weight Management	270-688-1500	16, 76, 80
Helmi, Hamid Emman, MD	Family Medicine	270-688-2077	34
Henderson, Myra, DO	Obstetrics & Gynecology Hospitalists	270-417-5340	51
Hendon, Amy, APRN	Urgent Care	270-399-7900	78
Henning, Glenn, DPM	Podiatry	270-926-4100	66
Henry, Kaci, APRN	Urgent Care	270-399-7900	78
Herman, Sherri, CRNA	Anesthesia	270-417-5561	15
Hester, April, CRNA	Anesthesia	270-338-8000	15
Hewitt, Keith, MD	Obstetrics & Gynecology Hospitalists	270-417-5340	51
Higdon, Andrew, MD	Hospitalists	270-417-4700	40
Higgs, Richard, APRN	Urgent Care	270-688-1352	78
Higgs, Tisha, APRN	Family Medicine	270-688-4401	30
Hodskins, Jacob, MD	Hematology & Oncology	270-688-3445	38
Hoegg, Melissa, APRN	Hematology & Oncology	270-688-3445	37, 38
Hoffman, Amanda, APRN	Urology	270-417-7880	80
Hogue, Caitlan, CRNA	Anesthesia	270-417-5561	15
Hogue, Caitlan, CRNA	Anesthesia	270-417-5561	15
Holbrook, Tina, APRN	Urgent Care	270-844-8600	51, 77

Alphabetical Provider Listing

Hollis, April, APRN	Urgent Care	270-377-2600	52, 79
Holman, Jeremy, PA-C	Neurological Surgery	270-688-1770	46
Holzknrecht, Robert, MD	Urgent Care	270-399-7900	78
Hornyak, Megan, CRNA	Anesthesia	270-417-5561	15
Houchin, Ashley, APRN	Urgent Care	270-377-2600	52, 79
Howard, Amanda, PA-C	Emergency Medicine	270-417-5911	27
Howard, William, APRN	Cardiology	270-417-7500	20
Hrustanovic-Kadic, Meliha, MD	Pulmonology/Critical Care	270-417-7515	68
Hughes, Jennifer, APRN	Wound Care	270-259-1612	81
Hulse, Geoffrey, MD	Orthopedics & Sports Medicine	270-926-4100	56
Humphries, Jeri, PA-C	Emergency Medicine	270-259-9400	27
Iftikhar, Hassaan, MD	Nephrology	270-689-1919	45
Itani, Hayat, MD	Family Medicine	270-688-2077	32
Jarboe, Charles, MD	Emergency Medicine	270-259-9400	27
Jenkins, Jeffrey, CRNA	Anesthesia	270-338-8000	15
Johnson, Cari, APRN	Family Medicine	270-259-8888	30
Johnson, Corey, MD	Urology	270-417-7880	80
Johnson, David, MD	Internal Medicine	270-685-1066	42
Johnson, Heather, MD	Pediatric Hospitalists	270-417-4705	62
Johnson, Lacey, APRN	Urgent Care	270-377-2600	52, 79
Johnson, Matthew, APRN	Hospitalists	270-417-4700	40
Johnson, Rayana, MD	Pediatric Hospitalists	270-417-4705	62
Johnson, Susan, CNM, APRN	Obstetrics & Gynecology	270-926-3700	49
Johnson, W. Alex, PA-C	Cardiology	270-417-7500	20
Johnston, Andrea, MD	Pediatrics	270-683-3232	62
Joines, Shirlene, APRN	Cardiology	270-240-2129	21
Jones, Chesley, APRN	Behavioral Services	270-399-7900	17
Jones, David, MD	Ophthalmology	270-926-3297	53
Jones, Hailey Craig, PA-C	Neurological Surgery	270-688-1770	46
Joseph, Elvis, MD	Emergency Medicine	270-417-5911	26
Joshi, Abinash, MD	Sleep Medicine	270-688-2077	32, 71, 72
Juric, Lauren, PA-C	Neurological Surgery	270-688-1770	46
Kania, Tracy, CRNA	Anesthesia	270-417-5561	15
Karcz, Ronald, PA-C	Emergency Medicine	270-417-5911	27
Kassinger, Brooke, PA-C	Urgent Care	270-688-1352	78
Kaufman, Clinton, DO	Surgery	270-259-3035	74
Keeley, Benjamin, MD	Family Medicine	270-686-8500	31
Keller, Brad, MD	Pediatric Cardiology	502-584-3200, Option 9	60
Keller, Courtney, APRN	Family Medicine	270-274-4771	28
Keller, Sarah, APRN	Gastroenterology & Hepatology	270-417-7800	36
Kelley, Michael, MD	Cardiology	270-417-7500	20
Kelly, Ashley, CRNA	Anesthesia	270-417-5561	15
Kenny, John, MD	Cardiology	502-584-2029	21
Keown, Amber, APRN	Urgent Care	270-399-7900	78
Kim, Suk Ki, MD	Pain Management	270-684-5679	59
King, Bradley, MD	Family Medicine	270-926-2273	35
King, Kevin, MD	Emergency Medicine	270-338-8332	26
Kirkendoll, Dodie, APRN	Cardiology	270-417-7500	20
Kittinger, Benjamin, MD	Plastic & Reconstructive Surgery	270-688-3700	22, 64
Kittinger, Janae, MD	Plastic & Reconstructive Surgery	270-688-3700	22, 64
Kittinger, Shawney, APRN	Critical Care	270-417-7515	68
Kline, David, MD	Infectious Disease	270-417-7850	41
Kolok, Damon, MD	Family Medicine	270-688-2077	32
Koo, Gregory, MD	Family Medicine	270-879-3711	29, 77
Krueger, Selena, APRN	Palliative Care	270-688-4401	59
Kuiper, Kirsi, MD	Family Medicine	270-688-2077	33
La Favers, Amanda, CRNA	Anesthesia	270-417-5561	15
Lamar, Cristina, DO	Pain Management	270-688-3550	58
Lamb, James, MD	Neurology	270-417-7830	47
Lanham, Erik, DO	Surgery	270-683-3720	75, 76
Lanham, Theresa, DO	Endocrinology	270-688-3500	28

Alphabetical Provider Listing

Lanni, Elizabeth, MD	Anesthesia	270-417-5561	15
Lea, William, MD	Interventional Radiology	270-417-6100	70
Leach, Reagan, PA-C	Emergency Medicine	270-417-5911	27
Ledford, Steven, DDS	Oral & Maxillofacial Surgery	270-208-9005	53
Ledoux, Karla, MD	Neurology	270-417-7830	47
Lee, Jason, MD	Pain Management	270-688-3550	58
Lee, Mark, DO	Obstetrics & Gynecology	270-259-2700	48
Lewis, Bracken C., MD	Internal Medicine	270-377-2626	42
Lohmann, Jackie, PA-C	Critical Care	270-417-7515	68
Loughran, Robert, CRNA	Anesthesia	270-417-5561	15
Lovell, Michael, CRNA	Anesthesia	270-417-5561	15
Lu, Zhen, MD	Family Medicine	270-688-2077	33
Luckett, Jeremy, MD	Internal Medicine	270-240-2305	43
Lyons, John, CRNA	Anesthesia	270-259-9400	15
Maheshwari, Jewraj, MD	Hematology & Oncology	270-688-3445	37, 38
Mahoney, Lauren, PA-C	Orthopedics & Sports Medicine	270-417-7940	54, 55
Majmudar, Manoj, MD	Pulmonology	270-338-8000	67
Makhoul, Johnny, MD	Cardiology	270-417-7500	20
Mannahan, Nichole, APRN	Urgent Care	270-844-8600	51, 77
Maples, Tyler, CRNA	Anesthesia	270-417-5561	15
Marshall, Kim, APRN	Gastroenterology & Hepatology	270-417-7800	36
Martin, Lynette, MD	Pediatrics	270-683-3232	62
Martin, Sara, APRN	Allergy & Immunology	270-684-6144	14
Martin, Shailer, DPM	Podiatry	270-377-2440	64
Martin, William, MD	Orthopedics & Sports Medicine	270-926-4100	56
Marvel, Andrea, APRN	Family Medicine	812-395-2011	34
Mason, Ericka, APRN	Bariatrics/Weight Management	270-688-1500	16, 76, 80
Mason, Jeremiah, DO	Pediatrics	270-683-3232	62
Matthew, Roshan, MD	Cardiology	270-240-2129	21
Maxim, Dawn, APRN	Cardiology	502-584-2029	21
McBride, Anthony, MD	Orthopedics & Sports Medicine	270-417-7940	55
McBride, Gail, APRN	Anesthesia	270-417-6950	14
McBride, Matt, CRNA	Anesthesia	270-417-5561	15
McCarty, Brianna, APRN	Family Medicine	270-926-2273	35
McClure, Robert, MD	Family Medicine	270-879-3711	29
McCormack, Jeanie, DO	Neurology	270-417-7830	47
McCormack, Megan, APRN	Urgent Care	270-688-1352	78
McCoy, Tamberly, MD	Family Medicine	270-926-1150	36
McDonald, Rachel, APRN	Urgent Care	270-377-2600	52, 79
McGhee, Timothy, MD	Family Medicine	270-821-4444	30
McIntosh, Lori, DO	Neurohospitalists	270-417-7830	46
McKenzie, Kali, APRN	Cardiology	270-377-2384	19
McKindles, Rebecca, MD	Family Medicine	270-684-1145	31
McKinley, Meghan, APRN	Family Medicine	270-684-1145	31
McLimore, Ellen, APRN	Cardiology	270-417-7500	20
McMillen, Scott, PA-C	Emergency Medicine	270-417-5911	27
McPherson, Terry, PA-C	Orthopedics & Sports Medicine	270-417-7940	55
McVicker, Joseph, CRNA	Anesthesia	270-417-5561	15
Medsker, Sara, DO	Pediatrics	270-683-3232	62
Mehrzad, Aziz, MD	Geriatrics	270-688-4401	37
Melvin, Katie, CNM, APRN	Obstetrics & Gynecology	270-926-3700	49
Menna, Barry, DO	Neurology	270-417-7830	47
Meredith, Tara, APRN	Pain Management	270-259-9405	59
Meschko, Kara, APRN	Anesthesia	270-417-6950	14
Milem, Charles, MD	Orthopedics & Sports Medicine	270-926-4100	56
Miller, Isaac, MD	Sports Medicine	270-230-0124	54, 72, 73
Miller, Jessie, MD	Anesthesia	270-417-5561	15
Miller, Michaela, CRNA	Anesthesia	270-417-5561	15
Mills, Christy, CRNA	Anesthesia	270-338-8000	15
Mills, Jason, MD	Pathology	270-417-6530	60
Millsap, Mark, MD	Ophthalmology	270-926-3297	53

Alphabetical Provider Listing

Minson, Jared, DPM.....	Podiatry	270-417-7400.....	65
Mischler, Jacob, PA-C.....	Neurological Surgery.....	270-688-1770.....	46
Mohan, Shaun, MD, FHRS.....	Pediatric Cardiology.....	502-584-3200, Option 9.....	60
Moore, Andrea, MD.....	Obstetrics & Gynecology.....	270-926-3700.....	49
Moore, Lisa, LCSW.....	Behavioral Services.....	270-417-7980.....	17
Moore, Paul, MD.....	Cardiothoracic Surgery.....	270-417-7510.....	21
Moore, R. Keith, MD.....	Orthopedics & Sports Medicine.....	270-926-4100.....	56
Moorman, Becky, LPCC.....	Behavioral Services.....	270-417-7980.....	17
Morris, Haley, CRNA.....	Anesthesia.....	270-417-5561.....	15
Morris, Nicholas, PA-C.....	Emergency Medicine.....	270-417-5911.....	27
Moseley, Marcus, DO.....	Surgery.....	270-683-3720.....	74, 75
Muhammad, Mustafa, MD.....	Nephrology.....	270-765-5112.....	45
Mulligan, John, MD.....	Radiology.....	270-685-7100.....	69
Mullins, Alan, MD.....	Surgery.....	270-683-3720.....	75, 76
Muradov, Johongir, MD.....	Surgery.....	270-377-2440.....	74
Murphy, Morgan, DO.....	Family Medicine.....	270-688-2077.....	34
Murtaza, Rauf, MD.....	Anesthesia.....	270-417-5561.....	15
Muzoora, Michael, MD.....	Pulmonology/Critical Care.....	270-417-7515.....	67, 68
Nadar, Vinayak, MD.....	Pain Management.....	270-684-7179.....	59
Nafziger-Lyne, Shirl, MSW, LCSW.....	Behavioral Health.....	270-688-2077.....	32
Nance, Jamie, APRN.....	Urgent Care.....	270-377-2600.....	52, 79
Nance, Jonathan, CRNA.....	Anesthesia.....	270-417-5561.....	15
Nance, Raeann, CRNA.....	Anesthesia.....	270-417-5561.....	15
Nava, Kristofer, MD.....	Bariatrics/Weight Management.....	270-688-1500.....	16, 76, 80
Nawaz, Aamir, MD.....	Emergency Medicine.....	270-259-9400.....	27
Ndzi, Rene, DO.....	Hospitalists.....	270-417-4700.....	40
Nebel, Christopher, DO.....	Surgery.....	270-683-3720.....	74, 75
Neely, Jenny, APRN.....	Plastic & Reconstructive Surgery.....	270-688-3700.....	22, 64
Neill, Sarah, MD.....	Pulmonology/Critical Care.....	270-417-7515.....	68, 72
Nelson, Matthew, DO.....	Emergency Medicine.....	270-417-5911.....	26
Nesketa, Berhanemeskel, MD.....	Pulmonology/Critical Care.....	270-417-7515.....	68
Newberry, Dennis Lee, MD.....	Family Medicine.....	270-844-8600.....	29
Newcom, Bradly, MD.....	Pain Management.....	270-338-8392.....	58
Newman, Mandy, APRN.....	Family Medicine.....	270-377-2626.....	34
Niehaus, Jamie, APRN.....	Family Medicine.....	270-259-8888.....	30
Nitz, Matthew, MD.....	Radiology.....	270-685-7100.....	69
Nobile, George, MD.....	Emergency Medicine.....	270-259-9400.....	27
Noe, Monica, APRN.....	Pulmonology.....	270-338-8000.....	67, 71
Obulasetty, Mohitha, DO.....	Family Medicine.....	270-688-2077.....	34
Ogaz, Daniel, CRNA.....	Anesthesia.....	270-417-5561.....	15
Oller, Todd, CRNA.....	Anesthesia.....	270-417-5561.....	15
Osborne, Sarah, APRN.....	Pediatrics.....	270-688-4480.....	61
Ottman, Elizabeth, MD.....	Obstetrics & Gynecology.....	270-688-6035.....	50
Overby, Cindy, APRN.....	Otolaryngology.....	270-259-2714.....	57, 77
Padgett, Patrick, MD.....	Radiology.....	270-685-7100.....	69
Pahal, Parul, MD.....	Family Medicine.....	270-688-2077.....	33
Panzarella, Zachary, DO.....	Family Medicine.....	270-688-2077.....	33
Parker, Andrew, DO.....	Family Medicine.....	270-688-2077.....	34
Parrish, Ellen, APRN.....	Urgent Care.....	270-399-7900.....	78
Parsley, Heather, APRN.....	Family Medicine.....	270-242-2000.....	29
Paskal, Dennis, MD.....	Hospitalists.....	270-417-4700.....	40
Passafiume, Paul, MD.....	Emergency Medicine.....	270-259-9400.....	27
Patel, Rameshbhai, MD.....	Emergency Medicine.....	270-259-9400.....	27
Patel, Sheri, MD.....	Hospitalists.....	270-417-4700.....	40
Pathak, Akshay, MD.....	Hospitalists.....	270-338-8000.....	39
Patterson, Jama, APRN.....	Family Medicine.....	270-844-8600.....	29
Patterson, Scott, MD.....	Radiology.....	270-685-7100.....	69
Payne, Holly, APRN.....	Hospitalists.....	270-338-8000.....	39
Payne, Jeremy, APRN.....	Cardiology.....	270-240-2129.....	21
Payne, Robert, APRN.....	Surgery.....	270-683-3720.....	75
Pearson, Matthew, MD.....	Family Medicine.....	270-688-2077.....	33

Alphabetical Provider Listing

Pedley, Kelsey, APRN	Internal Medicine	270-240-2305	43
Peek, Meagan, MD	Pediatric Cardiology	502-584-3200, Option 9	60
Pennington, Ross, APRN	Anesthesia	270-417-5561	15
Petway, Zandra, MD	Occupational Medicine	270-688-1351	51, 52
Phelps, Jeffrey, CPO	Podiatry	270-684-6128	66
Phelps, Leslie, APRN	Urgent Care	270-688-1352	78
Phillips, Maddie, PA-C	Critical Care	270-417-7515	68
Phillips II, John, MD	Pediatrics	270-688-4480	61
Pierce, Andrew, MD	Emergency Medicine	270-338-8332	26
Pile, Justin, DO	Emergency Medicine	270-417-5911	26
Pinto, Meredith, PA-C	Surgery	270-683-3720	75
Polio, Joseph A., MD	Orthopedics & Sports Medicine	270-926-4100	56
Polio, Joseph L., MD	Orthopedics & Sports Medicine	270-926-4100	56
Polio, Taryn, PA-C	Orthopedics & Sports Medicine	270-926-4100	57
Polio, William, MD	Orthopedics & Sports Medicine	270-926-4100	56
Porter, Joseph, MD	Physical Medicine & Rehabilitation	270-417-7925	63
Potenza, Jensen, MD	Behavioral Services	270-417-7980	17, 18
Price, David, APRN	Neonatal-Perinatal	270-417-5314	44
Price, James, DO	Family Medicine	270-688-2077	32
Price, Micah, APRN	Pediatrics	270-688-4480	61
Price, Raven, MD	Behavioral Services	270-417-3700	18
Prunty, Marshall, MD	Family Medicine	270-688-2077	32
Puckett, Angela, APRN	Behavioral Services	270-417-7980	17
Pullin, Sheri, APRN	Family Medicine	270-844-8600	29
Quinn, Lori, APRN	Behavioral Services	270-417-7980	17, 18
Rajagopalan, Navin, MD	Cardiology	270-417-7500	20
Raque, Jessica, MD	Surgery	270-683-3720	75
Rascoe, Haley, APRN	Urgent Care	270-844-8600	51, 77
Rashada, Kim, MD	Obstetrics & Gynecology Hospitalists	270-417-5340	51
Rashidian, Suzanne, DO	Obstetrics & Gynecology	270-478-5334	50
Rastogi, Ashish, MD	Cardiology	270-417-7500	20
Ray, Amy, MD	Pediatrics	270-683-3232	62
Reader, G. Scott, MD	Cardiology	270-377-2384	19
Reinhart, Kayla, APRN	Emergency Medicine	270-259-9400	27
Reloj, Noel, MD	Neurology	270-769-6330	47
Renschler, Sarah, RDN, LD, CDCES	Education & Wellness	270-688-4804	22, 23, 24
Rey, Jonathan, MD	Emergency Medicine	270-259-9400	27
Rhodes, Ada, PA-C	Urgent Care	270-688-1352	78
Rhodes, Benjamin, PA-C	Interventional Radiology	270-417-6100	70
Rhodes, Gayle, MD	Occupational Medicine	270-688-1351	51, 52
Rhodes, Ramona, APRN	Hospitalists	270-417-4700	40
Rhodes, Tamara, APRN	Radiology	270-417-6100	70
Rice, Stuart, MD	Anesthesia	270-417-5561	15
Riley, Louis, MD	Obstetrics & Gynecology Hospitalists	270-417-5340	51
Riney, Chris, MD	Urology	270-417-7880	80
Roark, Dave, LPCC	Behavioral Services	270-688-1547	18
Roberts, Michelle, CRNA	Anesthesia	270-417-5561	15
Robison, Kirk, PA-C	Hospitalists	270-259-9555	39
Roby, Amanda, APRN	Hospitalists	270-417-4700	40
Roby, Steven, MD	Family Medicine	270-685-1066	35
Rogers, Angela, APRN	Family Medicine	270-926-2273	36
Rogers, Ted, MD	Orthopedics & Sports Medicine	270-230-0124	54
Roth, Gavin, MD	Anesthesia	270-417-5561	15
Rothwell, Nikki, PA-C	Urgent Care	270-399-7900	78
Sagar, Sandeep, MD	Cardiology	270-417-7500	20
Salamah, Ramez, MD	Internal Medicine	270-685-1066	42
Saleem, Maryam, MD	Nephrology	270-689-1919	45
Sallee, Jennifer, FNP-BC	Emergency Medicine	270-259-9400	27
Sayad, Jinah, MD	Internal Medicine	270-852-1636	42
Scheller, Lisa, CRNA	Anesthesia	270-417-5561	15
Schlenzter, Aaron, PA-C	Emergency Medicine	270-417-5911	27

Alphabetical Provider Listing

Schory, Thomas, MD	Surgery	270-259-3035	74
Schulman, Katherine, MD	Emergency Medicine	270-417-5911	26
Scott, Amy, LCSW, CADC	Behavioral Services	270-688-1547	18
Scott, Ashley, APRN	Hospitalists	270-417-4700	40
Shah, Aayushma, MD	Internal Medicine	270-259-9316	41
Shaw, Terry, LPO, CPO, FAAOP	Podiatry	270-684-7672	66
Shelby, Dawn, APRN	Emergency Medicine	270-259-9400	27
Shelby, Shelby, MS, RDN, LD, CDCES, MLDE	Education & Wellness	270-688-4804	22, 24, 25
Shelton, Lauren, APRN	Obstetrics & Gynecology	270-926-3700	49
Shire, Kebede, MD	Cardiology	270-417-7500	20
Sikka, Shawn, MD	Pain Management	270-259-9405	59
Silva, Lillian, CRNA	Anesthesia	270-417-5561	15
Silva, Rogelio, MD	Behavioral Services	270-844-8600	16
Sirak, Tseday, MD	Cardiology	270-417-7500	20
Sisk, Regina, APRN	Family Medicine	270-821-4444	30
Sisson, Libby, MD	Family Medicine	270-688-2077	33
Skaggs, Ashly, APRN	Behavioral Services	270-417-7980	17
Sloan, Tracey, APRN	Urgent Care	270-377-2600	52, 79
Smallwood, Dana, FNP-BC	Emergency Medicine	270-259-9400	27
Smith, Adam, DO	Behavioral Services	270-230-0212	16
Smith, Aileen, APRN	Endocrinology	270-926-2273	28
Smith, Anthony, DO	Pediatrics	270-259-5641	61
Smith, Benjamin, DO	Pain Management	270-688-3550	58
Smith, Billy, MD	Anesthesia	270-417-5561	15
Smith, Breanna, APRN	Surgery	270-683-3720	75
Smith, Ellie, PA-C	Critical Care	270-417-7515	68
Smith, Henry, MD	Plastic Surgery	270-245-2105	64
Smith, Maria, MD	Obstetrics & Gynecology Hospitalists	270-417-5340	51
Soboh, Khalil, MD	Hospitalists	270-417-4700	40
Sotingeanu, Dan, MD	Emergency Medicine	270-259-9400	27
Stelmach, Sarah, CRNA	Anesthesia	270-417-5561	15
Stevens, Joshua, MD	Obstetrics & Gynecology Hospitalists	270-417-5340	51
Stevenson, Claire, APRN	Neurological Surgery	270-688-1770	46
Stewart, Eric, MD	Family Medicine	270-688-2077	33
Stivers, Elizabeth, MD	Pediatrics	270-259-5641	61
Stolz, Justis, MD	Orthopedics & Sports Medicine	270-417-7940	55, 73
Stroud, Kylee, APRN	Urgent Care	270-377-2600	52, 79
Stroud, Tammy, APRN	Urgent Care	270-399-7900	78
Sturgill, Wesley, CRNA	Anesthesia	270-417-5561	15
Suzer, Okan, MD	Radiology	270-417-6100	70
Sweatt, Sylvia, APRN	Internal Medicine	270-240-2305	43
Sweatt, Terry, CRNA	Anesthesia	270-417-5561	15
Szemethy, Mitzi, CRNA	Anesthesia	270-417-5561	15
Tabb, Thomas, MD	Maternal-Fetal Medicine	270-417-7720	44
Tackett, Mark, MD	Family Medicine	270-821-4444	30
Tagg, William, MD	Radiology	270-417-6100	70
Tauil, Rebecca, PA-C	Emergency Medicine	270-338-8332	26
Taylor, Frank, MD	Pulmonology	270-200-4536	67
Taylor, Ronald, MD	Family Medicine	270-686-8500	31
Taylor, Tabitha, APRN	Family Medicine	270-377-2626	34
Taylor, Wade, DO	Urgent Care	270-688-1352	78
Terrell, Carla, APRN	Urgent Care	270-688-1352	78
Terry, Alicia, PA-C	Occupational Medicine	270-399-7727	52
Thiesse, Kathy, APRN	Endocrinology	270-926-2273	28
Thomas, J. Randall, MD	Hematology & Oncology	270-688-3445	37, 38
Thompson, Tasia, APRN	Internal Medicine	270-240-2305	43
Tidwell, James, MD	Plastic & Reconstructive Surgery	270-688-3700	22, 64
Tobolski, Jeff, DO	Emergency Medicine	270-417-5911	26
Todd, Maya, MD	Behavioral Services	270-417-7980	17
Tomasic, John, APRN	Emergency Medicine	270-338-8332	26
Townes, Emily, PA-C	Orthopedics & Sports Medicine	270-377-2600	56

Alphabetical Provider Listing

Townsend, Eric, APRN	Emergency Medicine	270-259-9400	27
Townsend, Jeana, APRN	Family Medicine	270-821-4444	30
Troffkin, Neil, MD	Neurological Surgery	270-688-1770	46
Trotta, Adam, MD	Anesthesia	270-417-5561	15
Trover, Collin, MD	Anesthesia	270-417-5561	15
Tuck-Chappill, Jennifer, MD	Family Medicine	270-688-4401	30
Turner, Jacob, CRNA	Anesthesia	270-417-5561	15
Turnipseed, Juanita, CRNA	Anesthesia	270-417-5561	15
Uluc, Kutluay, MD	Neurological Surgery	270-688-1770	46
Umback, John, PA-C	Neurological Surgery	270-688-1770	46
Unsel, Lindie, APRN	Pulmonology/Critical Care	270-417-7515	68, 71, 72
Utley, David, DO	Family Medicine	270-844-8600	29
Vandiver, Hilary, APRN	Obstetrics & Gynecology	270-377-2600	50
Vaught, Lisa, APRN	Family Medicine	270-273-3293	29
Venditti, Andrew, PA-C	Neurological Surgery	270-688-1770	46
Veyel, Cynthia, APRN	Urgent Care	270-230-0182	51, 77
Villafuerte, Betty, MD	Endocrinology	270-688-3500	28
Vincent, Clay, APRN	Internal Medicine	270-259-9316	41
Vora, Kishor, MD	Cardiology	270-683-8672	21
Waldron, Ginger, CRNA	Anesthesia	270-259-9400	15
Walker, Dustton, DNP, APRN	Pain Management	270-338-8392	58
Warburton, Daniel, MD	Urology	270-417-7880	80
Ward, Brian, MD	Pathology	270-417-6530	60
Waring, Thomas, MD	Pulmonology/Critical Care	270-417-7515	68
Washer, Aidan, PA-C	Emergency Medicine	270-417-5911	27
Watkins, Carl, MD	Radiology	270-685-7100	69
Watkins, Katie, APRN	Cardiology	270-377-2384	19
Watson, Ann, APRN	Obstetrics & Gynecology	270-926-3700	49
Weaver, David, MD	Neurological Surgery	270-688-1770	46
Webb, Austin, MD	Internal Medicine	270-686-8500	41
Webb, Erinn, DO	Family Medicine	270-688-2077	33
Weyhrauch, Derek, MD	Pediatric Cardiology	502-584-3200, Option 9	60
Whitmer, Stephanie, MD	Family Medicine	270-377-2626	34
Wical, Todd, DO	Emergency Medicine	270-259-9400	27
Wiggins, Deanna, APRN	Hospitalists	270-417-4700	40
Wijeratne, Ranjith, MD	Gastroenterology & Hepatology	270-417-7800	36
Williams, Benjamin, PA	Emergency Medicine	270-259-9400	27
Williams, Marcus, CRNA	Anesthesia	270-417-5561	15
Williams, Tanisha, APRN	Hospitalists	270-259-9555	39
Wills, Christina, APRN	Emergency Medicine	270-259-9400	27
Wilson, Reid, MD	Orthopedics & Sports Medicine	270-417-7940	54, 55, 73
Wilson, Will, MD	Radiology	270-417-6100	70
Wimsatt, Hannah, APRN	Anesthesia	270-417-6950	14
Wimsatt, Lisa, CNM, APRN	Obstetrics & Gynecology	270-688-6035	50
Winkler, Sarah, APRN	Cardiology	270-417-7500	20
Winkler, Wanda, APRN	Nephrology	270-689-1919	45
Wray, Michael, DO	Emergency Medicine	270-417-5911	26
Wright, Lexi, MS, RDN, LD	Education & Wellness	270-688-4804	23, 25
Yarbrough, Clarizel, CRNA	Anesthesia	270-417-5561	15
Yeiser, Adrian, MD	Hospitalists	270-417-4700	40
Yeiser, Courtney, LPCC	Behavioral Services	270-688-1547	18, 19
Yeiser, Michael, MD	Pediatrics	270-683-3232	62
Yocum, Tiffany, APRN	Behavioral Services	270-417-7980	17
Young, Hannah, MD	Emergency Medicine	270-417-5911	27
Young, Holly, PA-C	Neurological Surgery	270-688-1770	46
Young, Jenny, RDN, LD, CDCES, MLDE	Education & Wellness	270-688-4804	22, 23, 24
Zayed, Abdalnasser, MD	Orthopedics & Sports Medicine	270-377-2600	56
Zody, Billie, MD	Obstetrics & Gynecology	270-926-3700	49

HEALTH SCREENINGS

Calcium Scoring Heart Scans



- **Screening description:** specialized X-ray test to detect and measure calcium-containing plaque in arteries
- **Indications:** family history of heart disease, high cholesterol, high blood pressure, smoking, lack of activity, diabetes or obesity
- **Referral needed?** No
- **Cost:** \$50 (Not covered by health insurance)
- **To schedule:** Call 270-417-7500

Vascular Screening



- **Screening description:** vascular sonogram captures images of the carotid artery and the abdominal aorta. Blood pressures in the ankle and brachial arteries are also taken to test the blood flow.
- **Indications:** Age 50 or older; diabetic; high blood pressure or cholesterol; family history of abdominal aortic aneurysm, stroke or heart disease
- **Referral needed:** No
- **Cost:** \$75 (Not covered by health insurance)
- **To schedule:** Call 270-683-3720

Colorectal Cancer Screening



- **Screenings available:**
 - Colonoscopy
 - Cologuard® screening
 - Fecal Immunochemical Test (FIT)
- **Indications:** 45 to 75 years of age, with or without personal or family history of colon cancer or bowel disease
- **Referral needed:** Yes
- **Cost:** Covered by healthcare insurance
- **To schedule:** Call 270-417-7870

Breast Cancer Screening



- **Screenings available:**
 - Digital Mammogram
 - 3-D Mammogram (tomosynthesis)
 - Breast Ultrasound
 - Breast MRI
 - Stereotactic Breast Biopsy
- **Indications:** Women ages 40 and older
- **Referral needed:** Yes
- **Cost:** Covered by healthcare insurance. Assistance for women age 40 to 64 needing help paying for a mammogram: call 800-811-9162.
- **To schedule:** Call 1-844-506-2666 or OwensboroHealth.org/Mammo

Lung Cancer Screening



- **Screening Description:** low-dose CT scan
- **Indications:**
 - High-risk for lung cancer
 - 50 to 80 years of age
 - 20 years of smoking at least one pack per day, or 10 years of two packs per day
 - Current smoker or quit less than 15 years ago
- **Referral needed:** No
- **Cost:** Maximum out-of-pocket cost \$99
- **To schedule:** call 270-417-7641



**We want to keep you healthy.
We want to make you proud.**

Owensboro Health Regional Hospital
Owensboro, Kentucky



Owensboro Health Muhlenberg Community Hospital
Greenville, Kentucky



Owensboro Health Twin Lakes Medical Center
Leitchfield, Kentucky

