

Coronavirus Disease 2019 (COVID-19) Employer Forum

- May 1, 2020

Dashboard

Updated April 30, 2020 at 2 p.m.

OH Lab Testing Counts	Total	Positive	Negative	Pending
Totals	1924	245	1588	91
Inpatient Lab	243	24	202	17
OH Screening Site	977	112	832	33
Emergency Department	231	38	184	9
OHMCH Lab	472	71	369	32
Other OH Site Test	1	0	1	0

OHRH Admitted	Total	Critical Care	COVID Unit
Positive Cases	10	2	8
Person Under Investigation	18	1	17
Total OHRH	28	3	25

OHMCH Admitted	Total	Critical Care	COVID Unit
Positive Cases	1	0	1
Person Under Investigation	1	0	1
Total OHMCH	2	0	2

COVID-19 Positive Cases	
County	Cases
Daviess	188
Christian	86
Hancock	6
Henderson	67
Hopkins	192
McLean	14
Muhlenberg	116
Ohio	58
Webster	25
Union	7
Grayson	62
Butler	114
Hart	3
Hardin	37
Total in Region	975
Kentucky Total	4,708

Deaths at OHRH by County	
Daviess County	4
Muhlenberg County	4
Grayson County	1
Shelby County	1
Kentucky Total Deaths	240

Deaths at OHRH by County	
Daviess County	4
Muhlenberg County	4
Grayson County	1
Shelby County	1
Kentucky Total Deaths	240

Resources	In Use	Available	Total
Ventilators	7	21	28
V60 Bipaps	5	24	29
Adult Heated High Flow	0	18	18
Auto-Titrating CPAP	5	6	11
Total Ventilators	17	69	86
Negative Pressure Rooms	28	48	76

Supplies on Hand	
N95 Masks	29,957
Surgical Masks	129,620
Cloth Homemade Masks	400
Mask with Shield	2625
Isolation Gowns	2,400
Eye Protection	4338
Gloves (200 each per box)	3,939
Intubation Halos	29

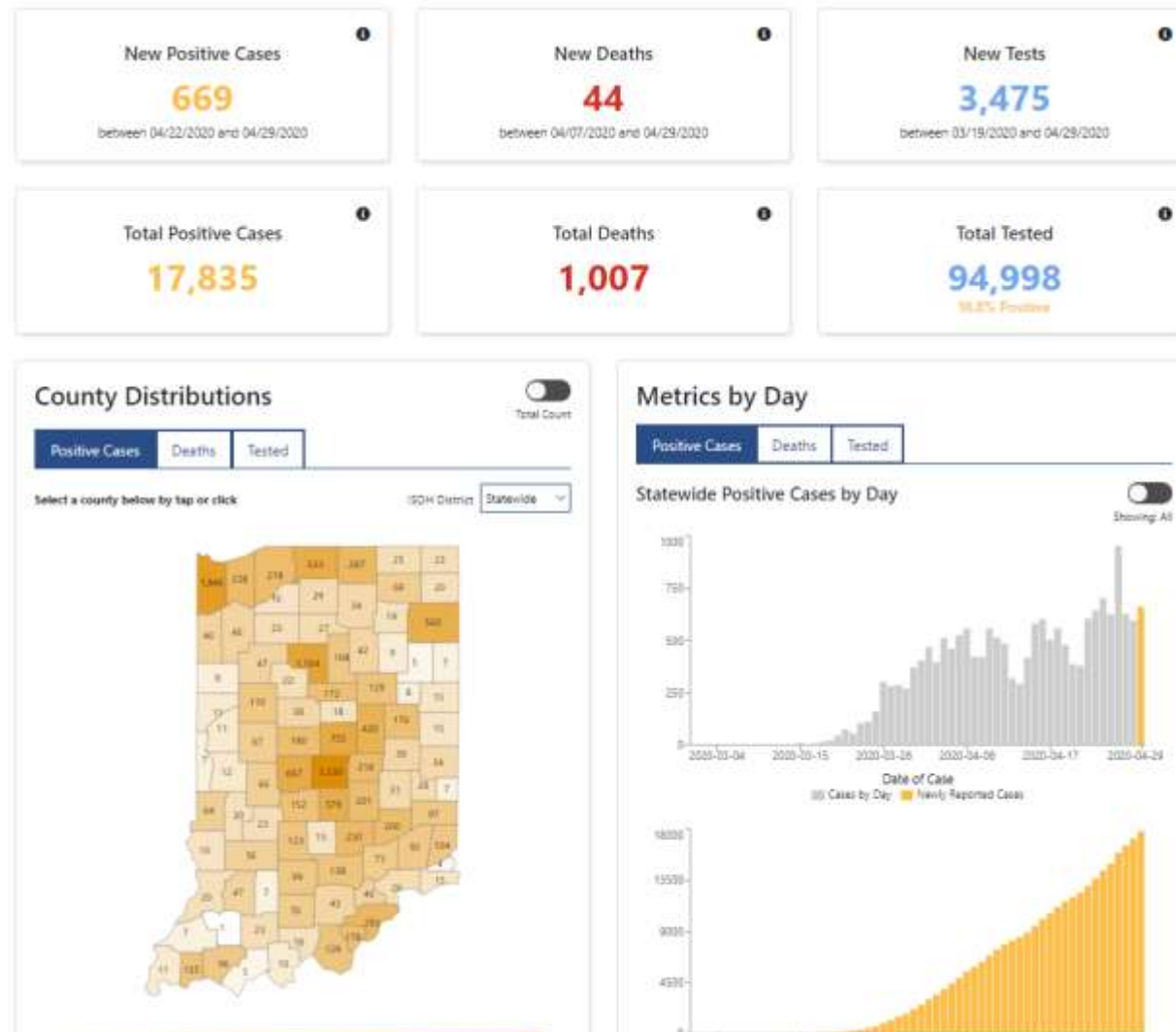
N95 Masks by Style	
3M 8000	7,278
3M 1860S	0
3M 1860	17,460
HH DB SM	70
HH DB Reg	0
other N95	5,149

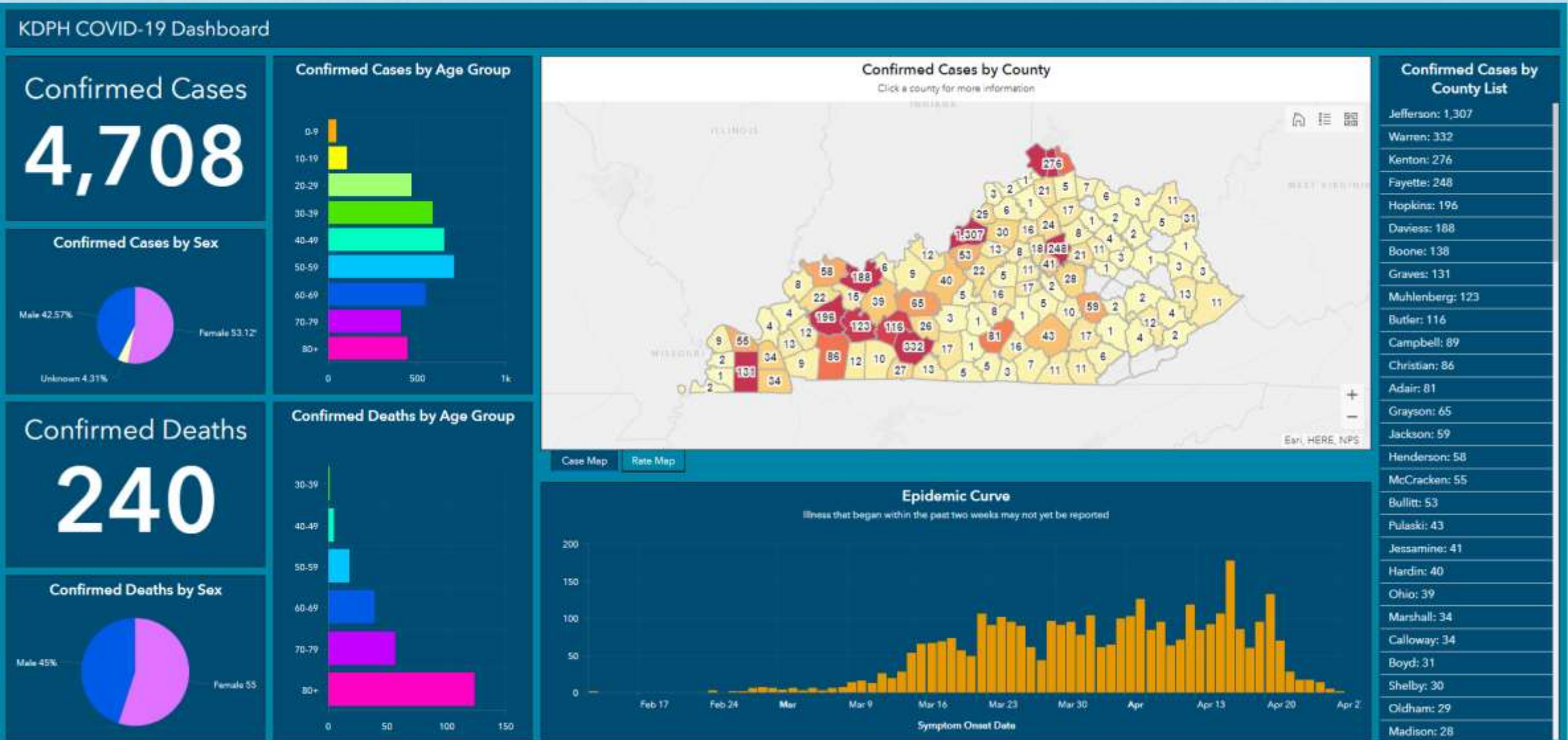
Gowns	
Isolation Gown	2,045
Surgical Gown	3,533

Gloves (boxes)	
Small Gloves	849
Medium Gloves	1105
Large Gloves	1276
Extra Large Gloves	709

Eye Protection	
Goggles/Glasses	941
Face Shield	3397

Laboratory Supplies	
Collection Kits (swabs + media)	2750
Abbott ID NOW	58
BioFire	110
Cepheid	26





OH Screeners

Through April 26, 2020, OH has staffed **3387.75** hours at an approximate investment of **\$169,388** in labor in collaboration with regional employers as we've worked together to flatten the curve.

OH Screeners are needed as the health system resumes outpatient non-emergent services and elective surgeries. Notifications are being made to impacted employers.

OH has created a training video for employers to assist in reducing variation in the screening process as you either outsource or assign it to internal team members in the coming days.

Employer Options

Thermal scanners--Southwire

Are there any updates relative to testing?

We know there is more testing availability but that testing is still limited.

The recommendation is still ONLY test people who are symptomatic.

We still don't know if antibody testing is effective in determining immunity.

We will use rapid testing for placement such as for nursing home beds, etc.

Otherwise, we will still use PCR testing which takes 2-4 days.

We are working on a plan to collaborate with employers for testing.

Is there information on the “testing plan” employers must provide according to the Governor’s HealthyAtWork plan?

Beshear said that the state included a testing plan in its rules not to have the burden of testing fall on the business, but rather to connect the business community to the state’s available testing capacity. “If that person is coming in and has a fever, we don’t just want them to be sent home,” Beshear explained. “We want them to be able to go get tested, so we know if we need to contact trace, and we know if other people need to be quarantined,” he continued. “It’s one of those policies where you say, ‘where do I send that person? How do I get the results back, and what steps do we take afterwards?’” https://www.thetimestribune.com/news/gov-beshear-discusses-10-rules-for-being-healthy-at-work/article_a13521dc-89a1-11ea-b839-43a7f5b12d30.html

Are there any other questions or needs?

<https://www.owensborohealth.org/news-events/news-media/2020/covid-19-signage/>

[Home](#) > [News & Events](#) > COVID-19 Signage

Published on April 29, 2020

COVID-19 Signage

Social Distance + Mask Flyer



Download and print:

- [Social Distance + Mask 8.5 x 11 inches](#)
- [Social Distance + Mask 11 x 17 inches](#)

Social Distancing Flyer



Download and print:

- [Social Distancing 8.5 x 11 inches](#)
- [Social Distancing 11 x 17 inches](#)

Table Tents



Download and print on cardstock (if available)

- Cut in half, fold in half: [Two table tents](#)
- Fold in half: [One table tent](#)

Screening Checkpoint Flyer



Download and print:

- [Screening Checkpoint 8.5 x 11 inches](#)
- [Screening Checkpoint 11 x 17 inches](#)