

# Coronavirus Disease 2019 (COVID-19) Employer Forum

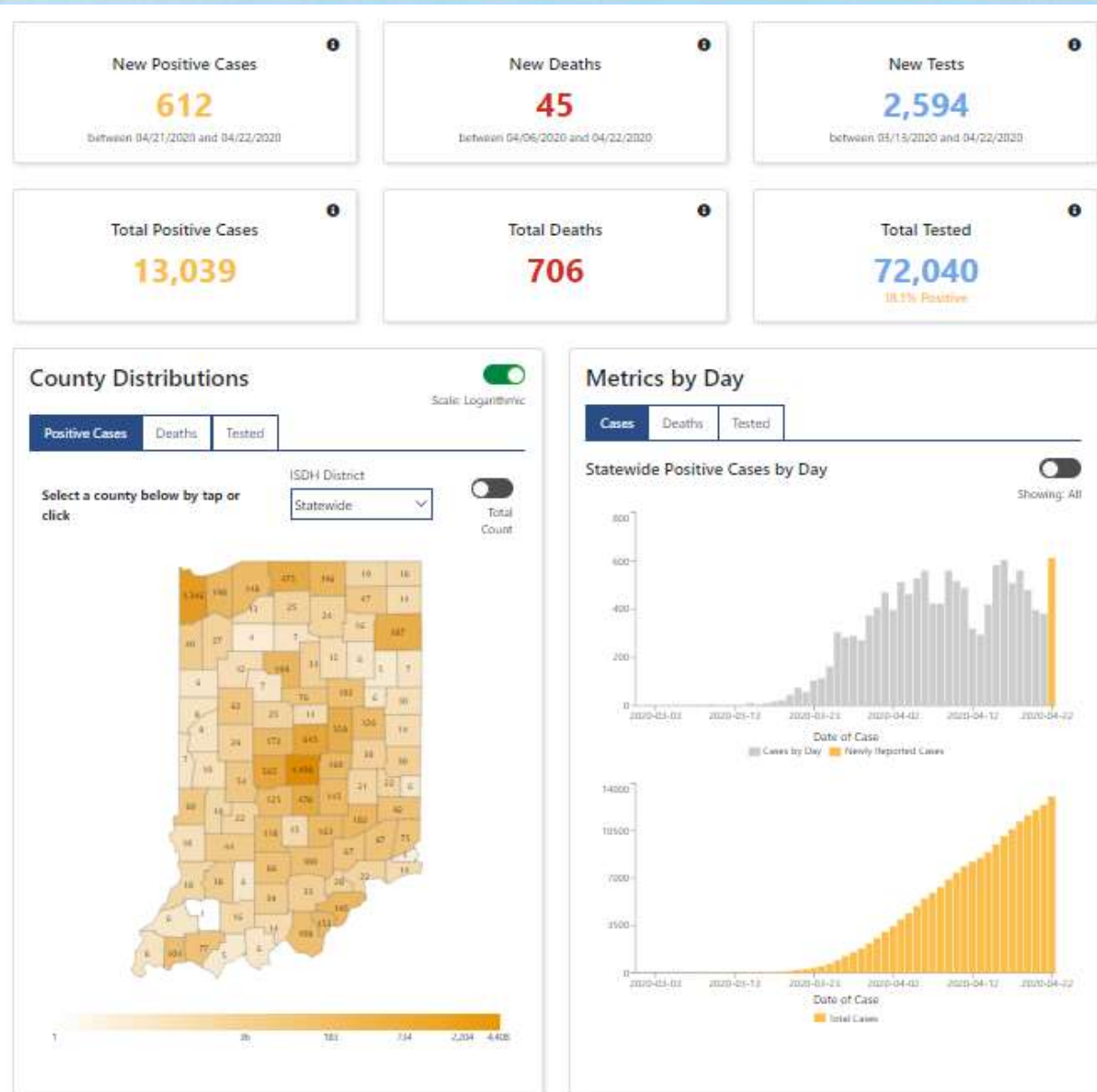
---

- April 24, 2020

# Dashboard

---

[https://us19.campaign-  
archive.com/?e=&u=e698cb115dbb85b48cd27f2f4&id=c981d9  
a868](https://us19.campaign-archive.com/?e=&u=e698cb115dbb85b48cd27f2f4&id=c981d9a868)

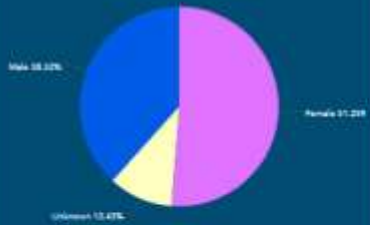


## KDPH COVID-19 Dashboard

### Confirmed Cases

# 3,481

Confirmed Cases by Sex



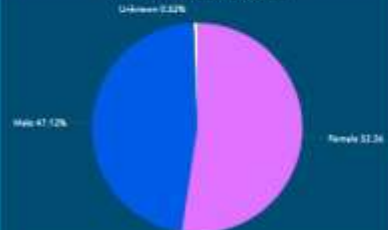
Confirmed Cases by Age Group



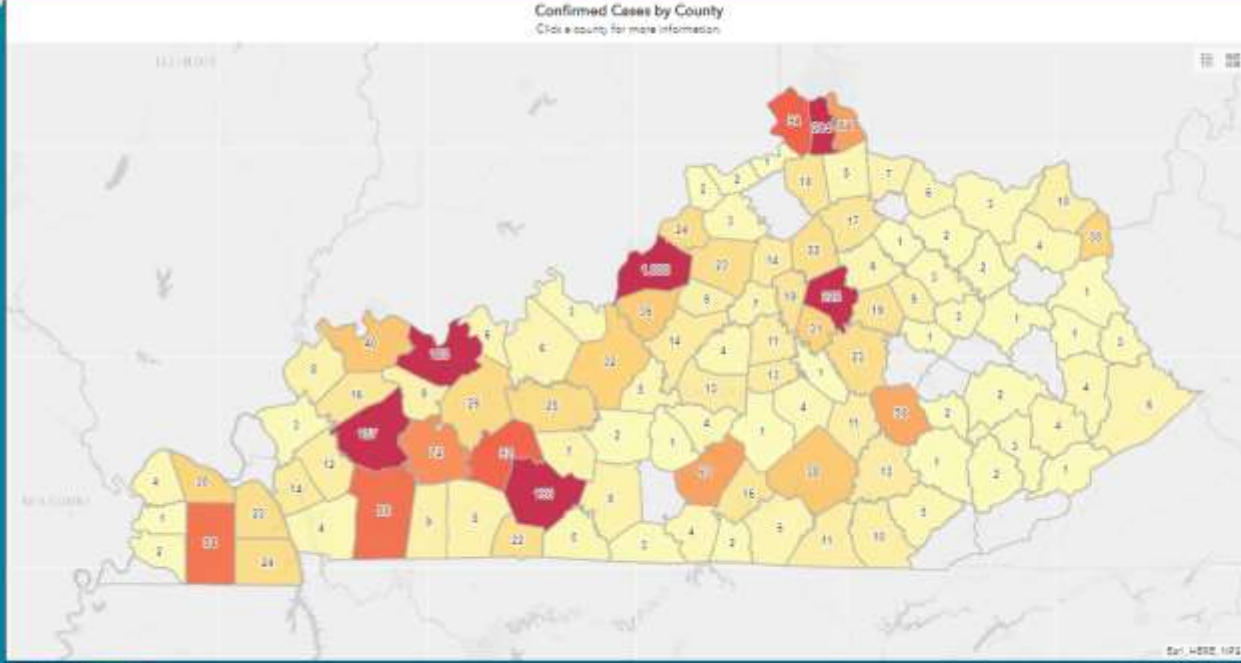
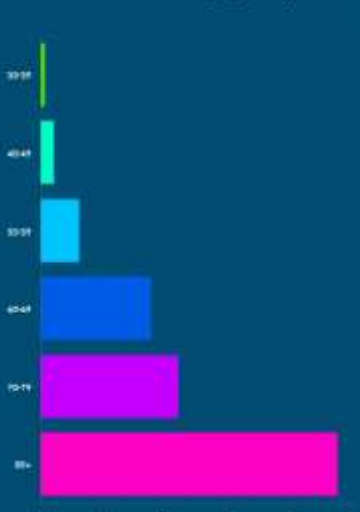
### Confirmed Deaths

# 191

Confirmed Deaths by Sex

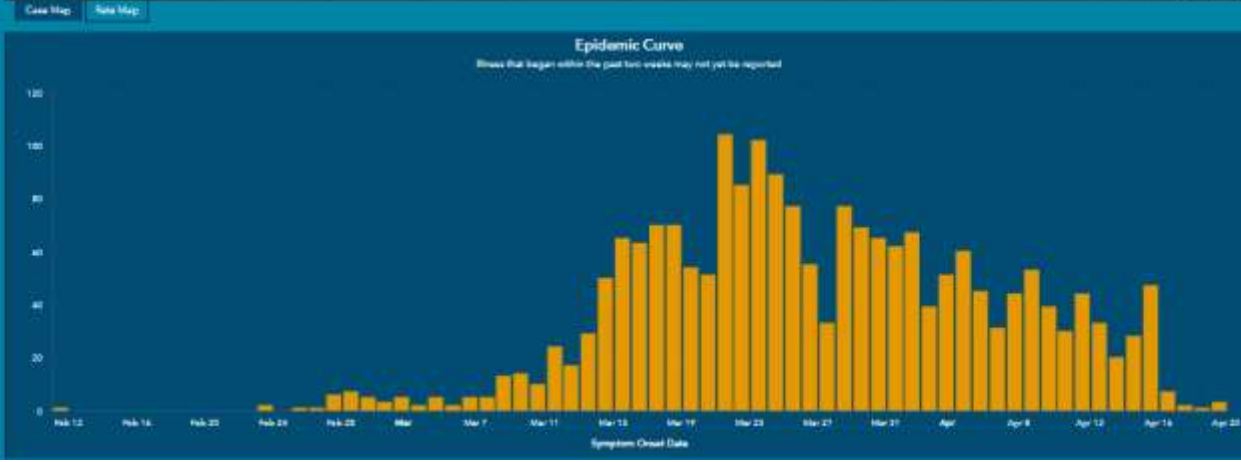


Confirmed Deaths by Age Group



Confirmed Cases by County List

Jefferson: 1,508
Fayette: 223
Kennett: 214
Hopkins: 137
DeWitt: 133
Warren: 130
Boone: 94
Butler: 92
Christian: 86
Groves: 84
Multnomah: 72
Campbell: 64
Adair: 63
Jackson: 58
Henderson: 40
Pulaski: 38
Butte: 34
Harrison: 32
Jessamine: 31
Boyd: 30
McCracken: 30
Ohio: 26
Gregg: 25
Calloway: 24
Dithers: 24
Shelby: 23
Madison: 23
Marion: 23
Simmons: 22
Scott: 22
Woodford: 19
Clark: 19
Greene: 18
Harrison: 17
Russell: 16
Wabash: 16
Nelson: 14
Franklin: 14
Lynn: 14
Marion: 13
Leure: 13
Boyer: 13
Caldwell: 12
McCreary: 11
Mason: 11
Rockaway: 11
Whitely: 10
Greenup: 10
Total: 9







## 24-Hour Coronavirus Hotline

For patients and community members with questions or possible symptoms.

Call: [877-888-6647](tel:877-888-6647)

[For Patients](#)

[COVID-19 Q&A](#)

[News & Resources](#)

[For Providers](#)

[For Employers](#)

[Cancellations](#)

[Visitor Restrictions](#)

[Community Message](#)

## COVID-19 Information for Employers

If you are an employer, you likely have lots of questions about how COVID-19 is affecting your business. We have gathered some of the most commonly-requested information on this page. If you can't find what you are looking for, please feel free to call the Owensboro Health COVID-19 Hotline (24 hours a day) at [877-888-6647](tel:877-888-6647).

### Latest News from Owensboro Health

[Click here to find out the latest updates](#) from Owensboro Health in regard to COVID-19.

### Employer Calls

We have held several presentations to help employers determine what they need to do as they face COVID-19. Click below to see the slides from the presentations.

Upcoming presentation: [April 10, 2020, 7:30 to 8 a.m.](#)

Meeting number (access code): 283 219 544.

Meeting password: covid

Join by phone: [1-415-655-0001](tel:1-415-655-0001)

- [April 7, 2020](#)
- [April 3, 2020](#)
- [March 27, 2020](#)

## Prevention

As an employer, you have a responsibility to help prevent the spread of COVID-19, but you may be wondering what you can actually do to protect your employees and stop the virus from spreading.

We have put together [this PDF with the current best practices](#) recommended by the CDC to prevent the spread of the virus in the workplace. Just click the link to download. This PDF includes additional guidance from the Green River District Health Department on how to prevent workplace exposure to COVID-19.

## CDC Guidance

We have also gathered some guidance from the CDC on what it means to be exposed to the virus, along with the CDC's recommendations on what should happen as far as quarantine and isolation if an employee is determined to have been exposed to the COVID-19 virus.

[Download a PDF with the CDC's info](#). Their information can also be found at [www.CDC.gov/coronavirus](http://www.CDC.gov/coronavirus)

## OSHA Guidance

The Occupational Health and Safety Administration has also provided some information in terms of control and prevention of the COVID-19 virus.

[Download the PDF with guidance from OSHA](#)

1. Does anyone have any questions for the group? You can enter it into chat or text it to me at 270-315-0414 if you don't want to ask the question.

There have been a number of questions pertaining to testing.

### PCR testing (nasal swab)

<https://www.sciencedaily.com/releases/2020/04/200409144805.htm>

"RT-PCR testing is most useful when it is positive," says Dr. Sampathkumar. "It is less useful in ruling out COVID-19. A negative test often does not mean the person does not have the disease, and test results need to be considered in the context of patient characteristics and exposure."

### Antibody testing

<https://www.fda.gov/medical-devices/letters-health-care-providers/important-information-use-serological-antibody-tests-covid-19-letter-health-care-providers>

<https://jamanetwork.com/journals/jama/fullarticle/2764954>

The FDA is not aware of an antibody test that has been validated for diagnosis of SARS-CoV-2 infection. While the FDA remains open to receiving submissions for these tests for such uses, based on the underlying scientific principles of antibody tests, the FDA does not expect that an antibody test can be shown to definitively diagnose or exclude SARS-CoV-2 infection.

Serologic antibody tests not only can confirm suspected cases after the fact, they can also reveal who was infected and didn't know it. Up to a **quarter** of people with SARS-CoV-2 infection may unwittingly spread the virus because they have mild or no symptoms.

# Resources

---



As the Governor begins allowing healthcare business to resume, we will need to discuss the availability of screeners. As volumes increase, the availability of staff will decrease. Please be mindful.